



Risk Assessment by Police of Intimate Partner Violence

Vasiliki Saini

25 10 2018



Intimate Partner Violence

Any act of physical, sexual, psychological or economic violence that occurs between former or current spouses or partners, whether or not the perpetrator shares or has shared the same residence with the victim.

Legal and Policy Framework

**Victims Rights
Directive**

2012/29/EU

**Istanbul
convention**

Directive on
the European
**Protection
Order** 2011/99/EU

**EU Commission
Strategic
Engagement for
Gender
Equality 2016-
2019**

EIGE's contribution



- To monitor Member States efforts in fulfilling requirements of the Victim's Rights Directive and Istanbul Convention
- To improve knowledge on the area of Risk assessment and Risk management of intimate partner violence
- To continue to support Member States in their efforts in these areas

Risk assessment and risk management of Intimate Partner Violence

Risk assessment is defined as an assessment of the lethality risk, the seriousness of the situation and the risk of repeated violence, including access to firearms (Istanbul Convention)

Risk management is generally defined as the response to the risk identification and assessment to ensure the prevention of risk, involving different strategies and a multiagency approach (Istanbul Convention)



Why EIGE focuses on Police?

- **Lead role in formal risk assessment**
- **1st agency that victims address to**



Objective



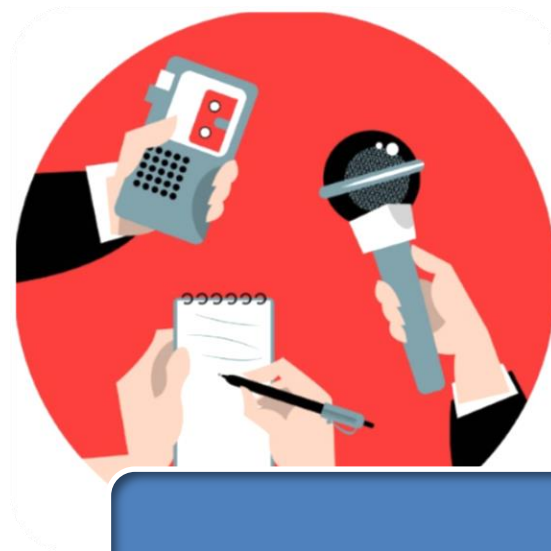
- **Improvement of institutional response in combating violence against women in EU by Member States**

- **Better protection of women from further victimization**

Methodology



Desk research



Interviews



**Experts working
meetings**

Next steps

Experts working groups

- 30 January 2019

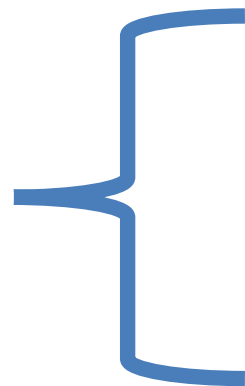
Final report

- Mid 2019



Outcome

Guide



**Guidelines on risk
assessment**

**Recommendations
on risk management**



Let's talk

Connect with us!



eige.europa.eu



[facebook.com/
eige.europa.eu](https://facebook.com/eige.europa.eu)



[twitter.com/
eurogender](https://twitter.com/eurogender)



[eige.europa.eu/
newsletter](http://eige.europa.eu/newsletter)



[eurogender.eige.
europa.eu](http://eurogender.eige.europa.eu)



[youtube.com/
user/eurogender](https://youtube.com/user/eurogender)



**Gedimino pr. 16,
LT-01103 Vilnius,
Lithuania**