

EIGE's work on Gender-based violence



Violence against women is rooted in women's unequal status in society and that status reflects the unbalanced distribution of social, political and economic power among women and men in society.

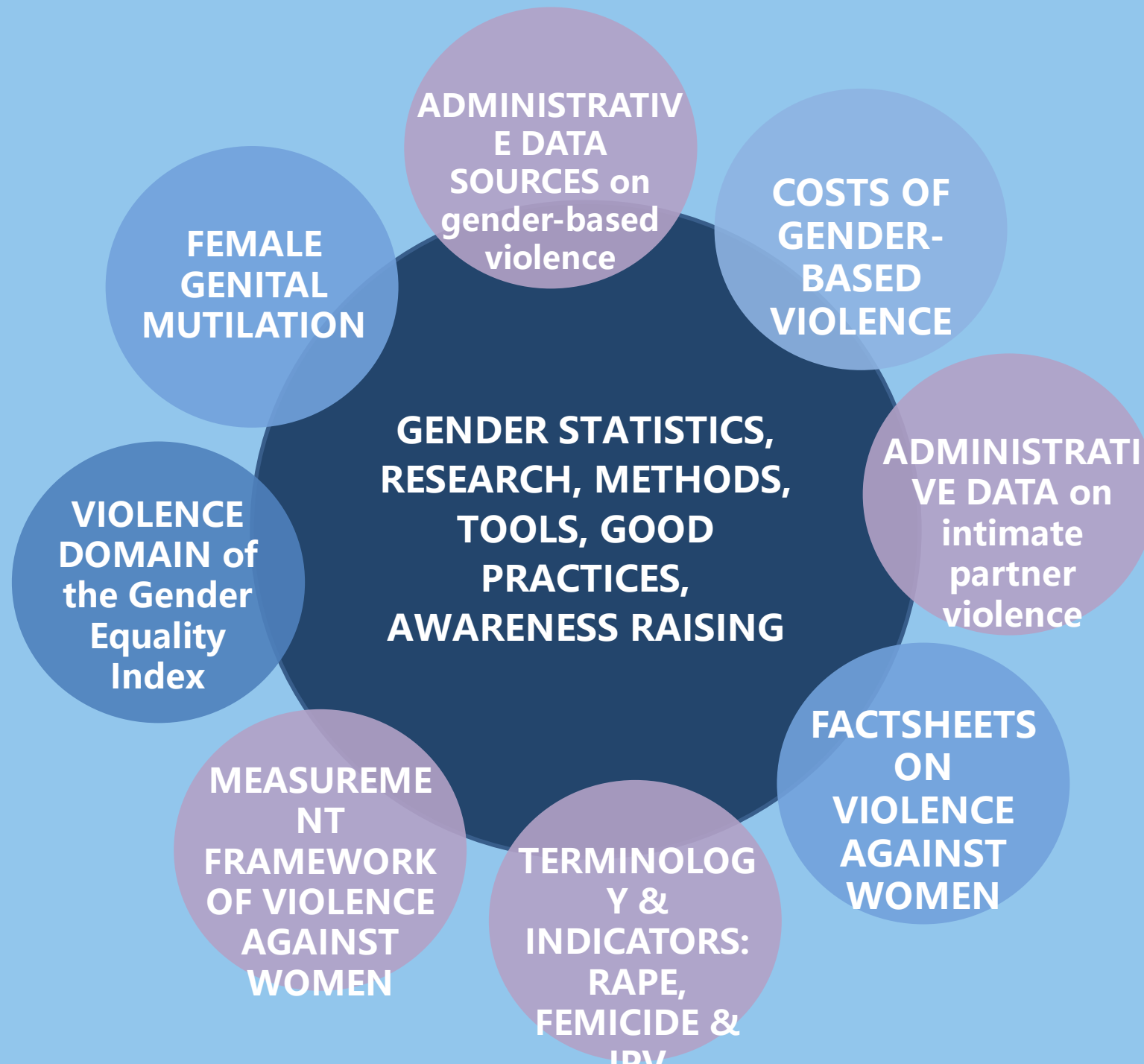
It is one of the most pervasive human rights violations of our time and a form of discrimination that results in, or is likely to result in, physical, sexual, psychological or economic harm or suffering to women.

In the EU 33% of women have experienced violence since the age of 15.

The cost of gender-based violence against women in the EU could amount to EUR 226 billion per year.



**EIGE focuses
on the
following
areas in its
work on
gender-
based
violence**



Strategic framework on Violence against Women 2015 – 2018

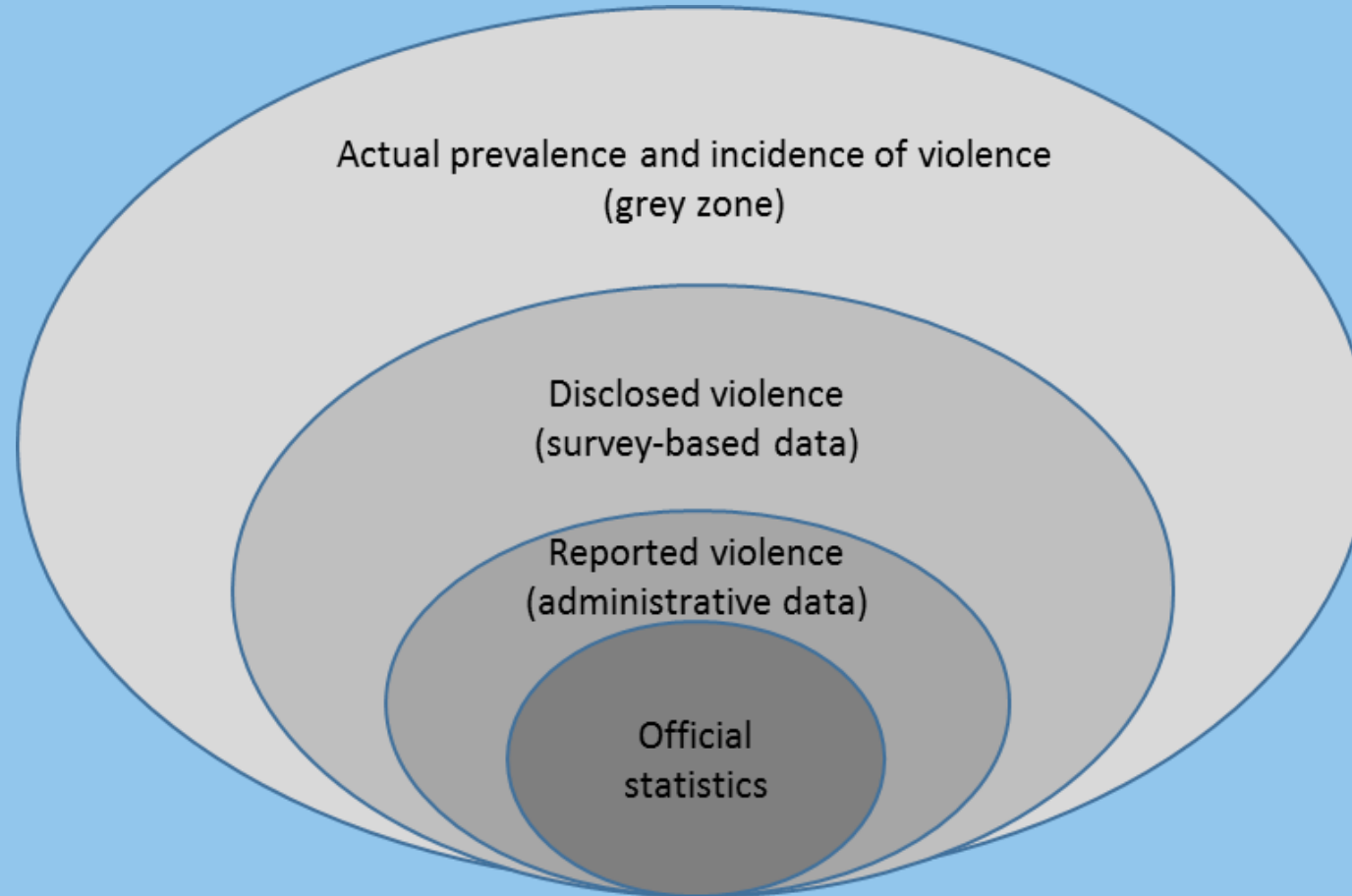
Improvement of data collection in the Member States

- Address data gaps and improve quality of data
- Support in collecting quality data
- Support in meeting reporting / monitoring requirements for the Victims' Rights Directive and the Istanbul Convention
- Prepare the methodology for collection of data

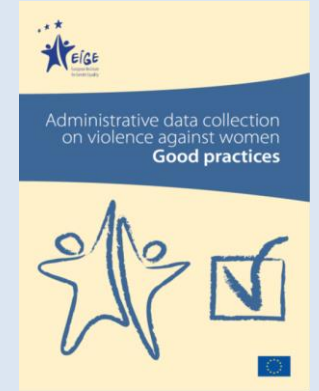
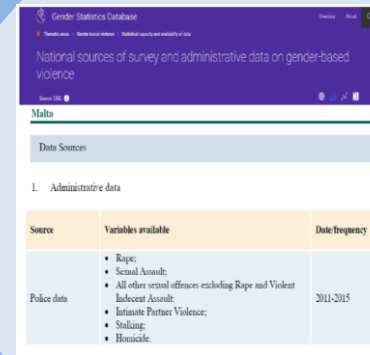
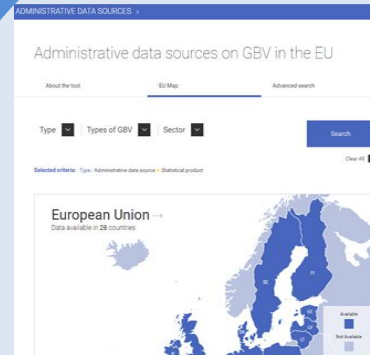
Activities in support of the Member States

- Propose and implement specific actions to facilitate the improvement of the quality of collected data
- Integrate violence against women within EIGE's gender statistics database
- Cooperate continuously with Eurostat
- Support the mainstreaming of gender into future data collection on violence against women

Measuring Violence against Women



EIGE's work on administrative data



MAPPING ADMINISTRATIVE DATA SOURCES

ONLINE MAPPING TOOL

GENDER STATISTICS DATABASE

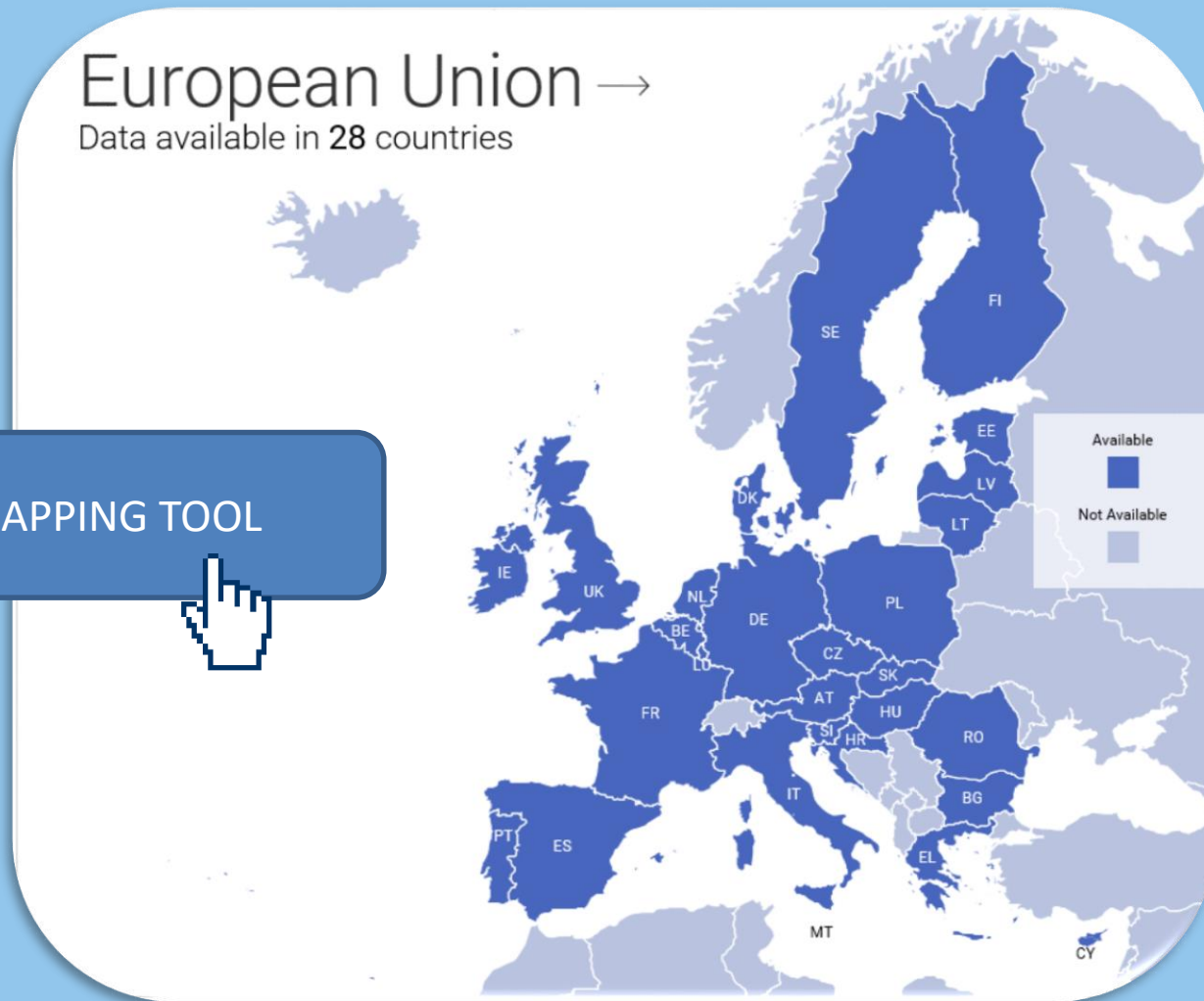
GOOD PRACTICES

Administrative data sources



ONLINE MAPPING TOOL

European Union →
Data available in 28 countries



Statistics on violence against women

Structured under 3 entry points:

- **Thematic areas**

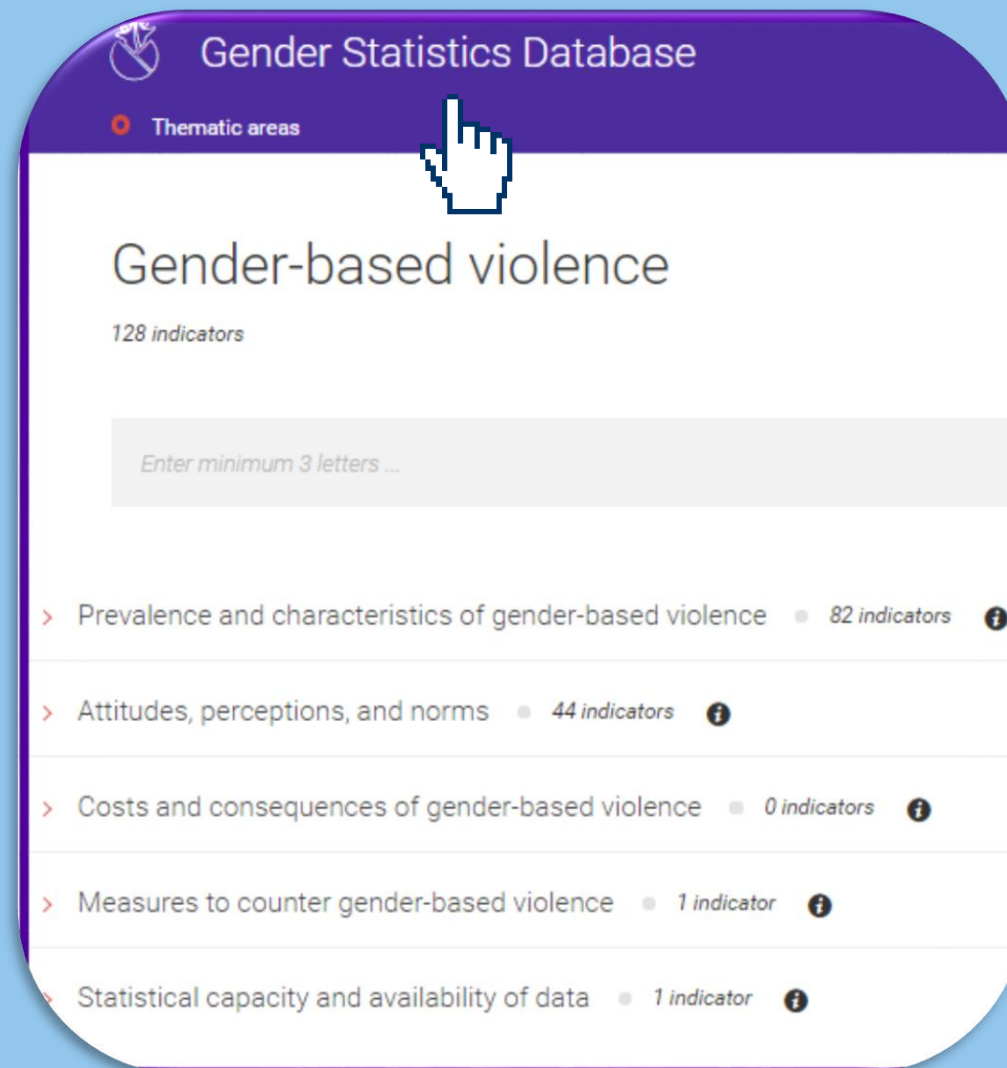
- ➔ Gender-based violence – 128 indicators

- **Beijing Platform for Action**

- ➔ Violence against Women (D) - 1 indicator

- **Gender Equality Index**

- ➔ Satellite domains - Violence – 11 indicators



Gender Statistics Database

Thematic areas

Gender-based violence

128 indicators

Enter minimum 3 letters ...

- > Prevalence and characteristics of gender-based violence • 82 indicators ⓘ
- > Attitudes, perceptions, and norms • 44 indicators ⓘ
- > Costs and consequences of gender-based violence • 0 indicators ⓘ
- > Measures to counter gender-based violence • 1 indicator ⓘ
- > Statistical capacity and availability of data • 1 indicator ⓘ

Good practices



Registration of FGM in hospitals

A pilot study for identifying adequate hospitals procedures in FGM cases (Belgium)



Rape Crisis Network

A secure online database on gender-based violence (Ireland)



Police report cases

Danish police nationwide and regular registration of comprehensive data (Denmark)



Nationwide registration in women shelters

The Danish nationwide registration of contacts with women's shelters



Ways forward

**GAPS
AND
CHALLENGES**

**TERMINOLOGY
AND
INDICATORS
STUDY**

**CONTINUED
ADMIN DATA
STUDY**

Challenges and gaps in administrative data

- ✓ Data **not** for statistical purposes
- ✓ **Differences** in legal definitions
- ✓ Lack of necessary **disaggregation**
- ✓ Lack of **inter-sectoral mechanisms** and coding systems
- ✓ Limitations to **accuracy, reliability** and **accessibility**

EIGE's work on terminology and indicators on rape, femicide and IPV



Uniform **definitions** for statistical purposes, guided by international agreements EU, UN and Council of Europe



Proposed **indicators** to regularly measure incidents in a comparable way based on administrative data



Recommendations to aid the improvement of data collection and of the International Classification of Crimes for Statistical Purposes

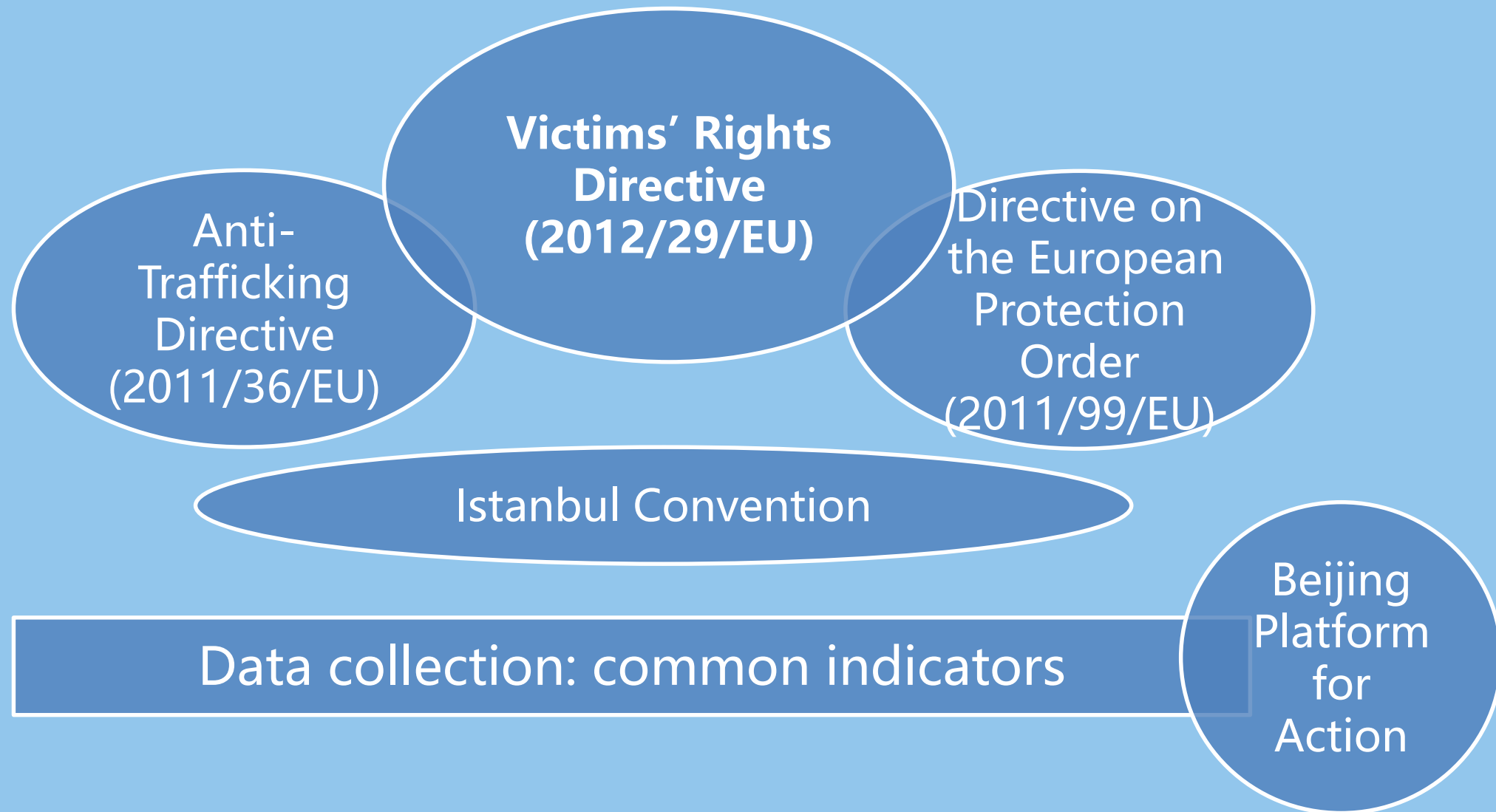
EIGE's uniform definitions for administrative data collection

RAPE	Sexual penetration, whether vaginal, anal or oral, through the use of object or body parts, without consent, using force, coercion or by taking advantage of the vulnerability of the victim.	
FEMICIDE	The killing of a woman by an intimate partner and death of a woman as a result of a practice that is harmful to women. Intimate partner is understood as former or current spouse or partner, whether or not the perpetrator shares or has shared the same residence with the victim.	
INTIMATE PARTNER VIOLENCE	GENERAL	Any act of physical, sexual, psychological or economic violence that occurs between former or current spouse or partner, whether or not the perpetrator shares or has shared the same residence with the victim.
	PHYSICAL VIOLENCE	Any act which causes physical harm to the partner or former partner as a result of unlawful physical force. Physical violence can take the form of, among others, serious and minor assault, deprivation of liberty and manslaughter.
	PSYCHOLOGICAL VIOLENCE	Any act or behaviour which causes psychological harm to the partner or former partner. Psychological violence can take the form of, among others, coercion, defamation, verbal insult or harassment.
	SEXUAL VIOLENCE	Any sexual act performed on the victim without consent. Sexual violence can take the form of rape or sexual assault.
	ECONOMIC VIOLENCE	Any act or behaviour which causes economic harm to the partner. Economic violence can take the form of, among others, property damage, restricting access to financial resources, education or the labour market, or not complying with economic responsibilities, such as alimony.

EIGE's proposed indicators for administrative data collection

RAPE	Annual number of women victims reporting rape aged 18 years and over	
FEMICIDE	Women victims of intimate femicide aged 18 and over committed by an intimate partner, as a share of women victims of homicide aged 18 and over.	
INTIMATE PARTNER VIOLENCE	GENERAL	Annual number of women victims of intimate partner violence aged 18 and over as recorded by administrative services
	PHYSICAL VIOLENCE	Annual number of women victims of physical intimate partner violence aged 18 and over, as recorded by administrative services
	PSYCHOLOGICAL VIOLENCE	Annual number of women victims of psychological intimate partner violence aged 18 and over, as recorded by administrative services
	SEXUAL VIOLENCE	Annual number of women victims of sexual intimate partner violence aged 18 and over, as recorded by administrative services
	ECONOMIC VIOLENCE	Annual number of women victims of economic intimate partner violence aged 18 or over, as recorded by administrative services

International commitments to data collection



Scope of Current Research

Assessing the quality and availability of administrative data on **intimate partner violence** and rape collected by police and justice

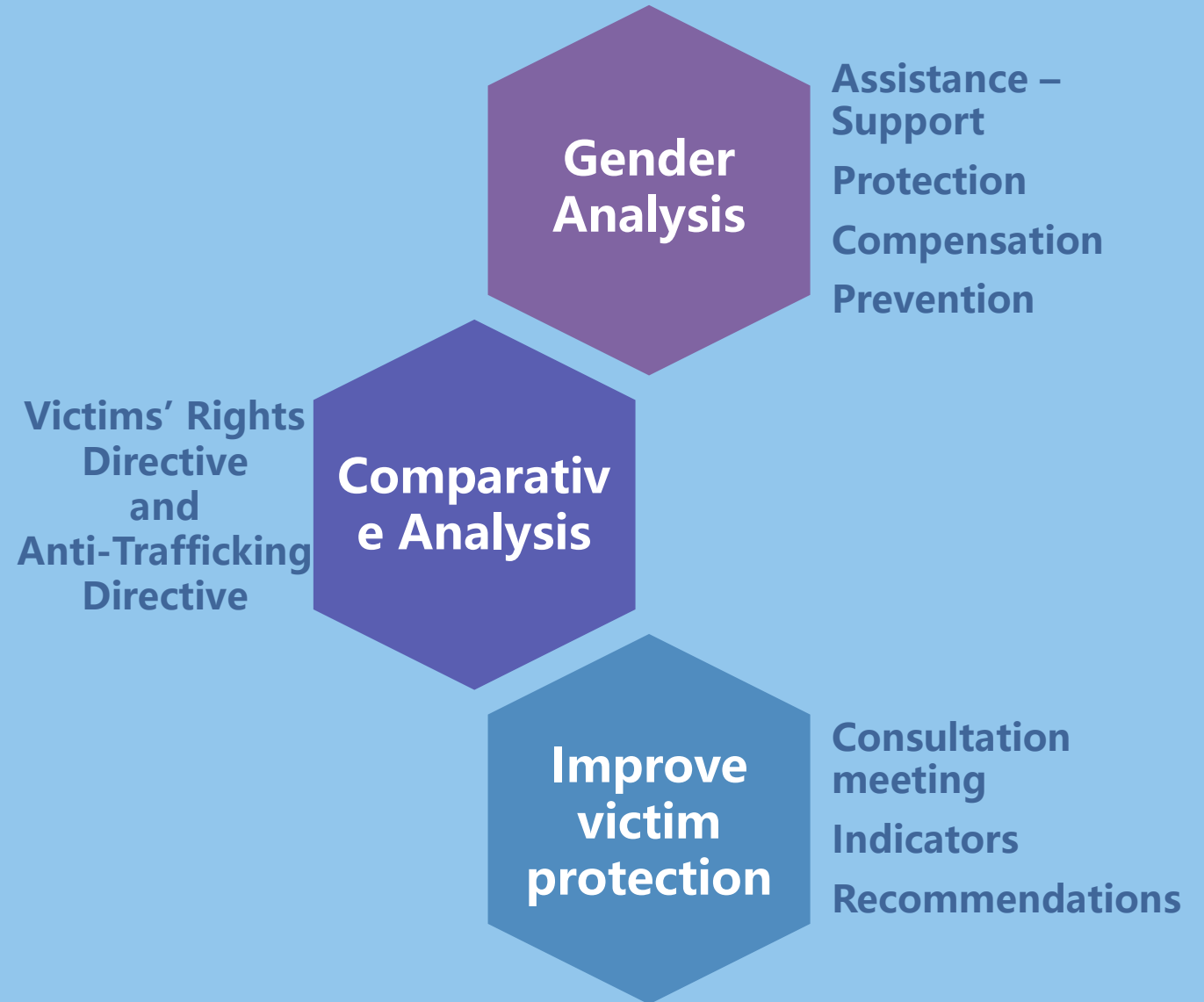
Identifying **gaps and challenges** to regular comparable data reporting

Developing **recommendations** to improve data collection methods

Analysis of Anti-Trafficking Directive

Assess prevention and protection measures covered from a GBV victim's perspective

Assess the differences/overlap with the Victims' Rights Directive

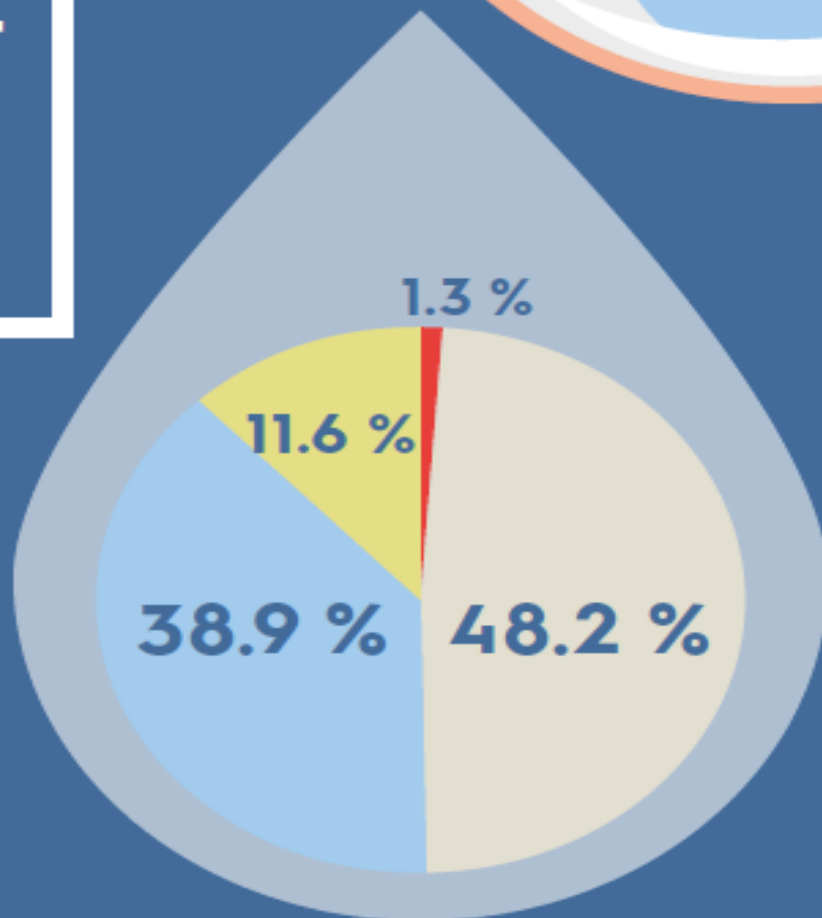




Intimate partner violence against women costs us all

What is intimate partner violence?

- 💧 Any act of physical/sexual/psychological/ economic violence
- 💧 The perpetrator is a former or current partner/spouse
- 💧 It can happen in a separate or shared household



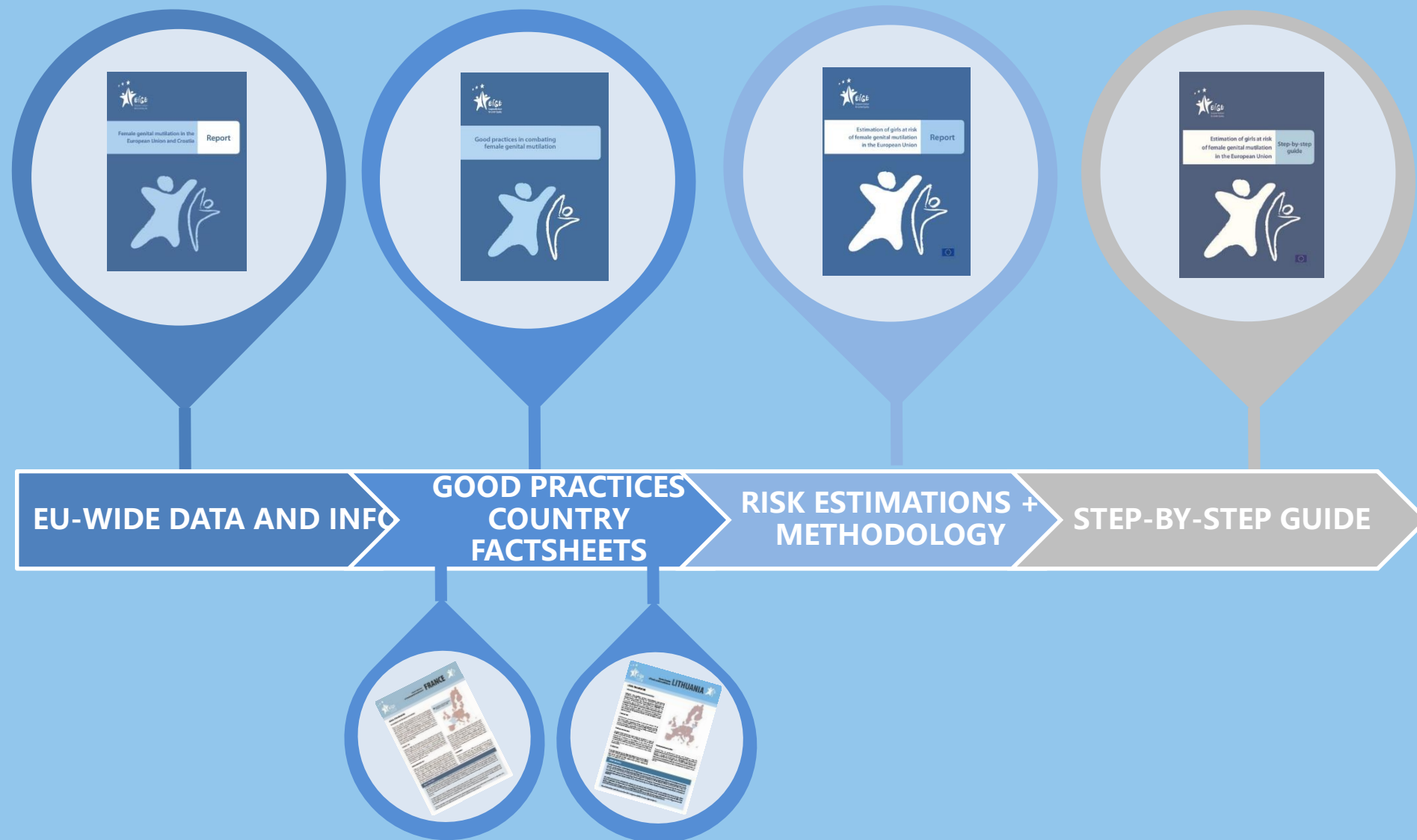
It is estimated to cost

**109 billion
euro per year**

How are the costs split?

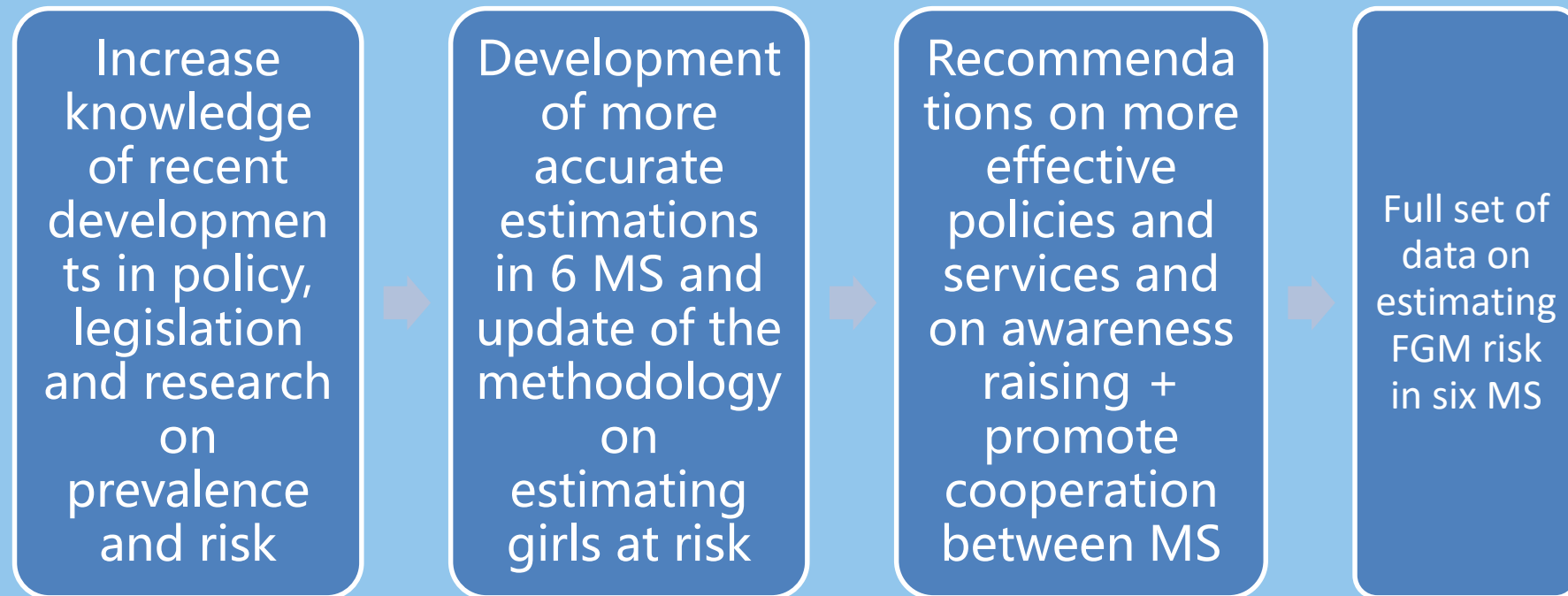
- 💧 **Physical and emotional impact**
- 💧 **Provision of services**
(health, social welfare, justice)
- 💧 **Lost economic output**
(lost earnings and absence from work)
- 💧 **Specialised services**
(shelters, helplines, support centres, counselling)

EIGE's work on FGM



EIGE's new 2017 study on FGM

- ✓ A follow-up study on risk assessment in Belgium, France, Italy, Greece, Malta and Cyprus
- ✓ May 2017 – February 2018
- ✓ Including new patterns of migration



Let's talk



Gedimino pr. 16, LT-01103
Vilnius, Lithuania



eige.europa.eu



<https://twitter.com/eurogender>



facebook.com/eige.europa.eu



youtube.com/user/eurogender



eige.europa.eu/newsletter



Eurogender network

