



EUROPEAN INSTITUTE FOR GENDER EQUALITY



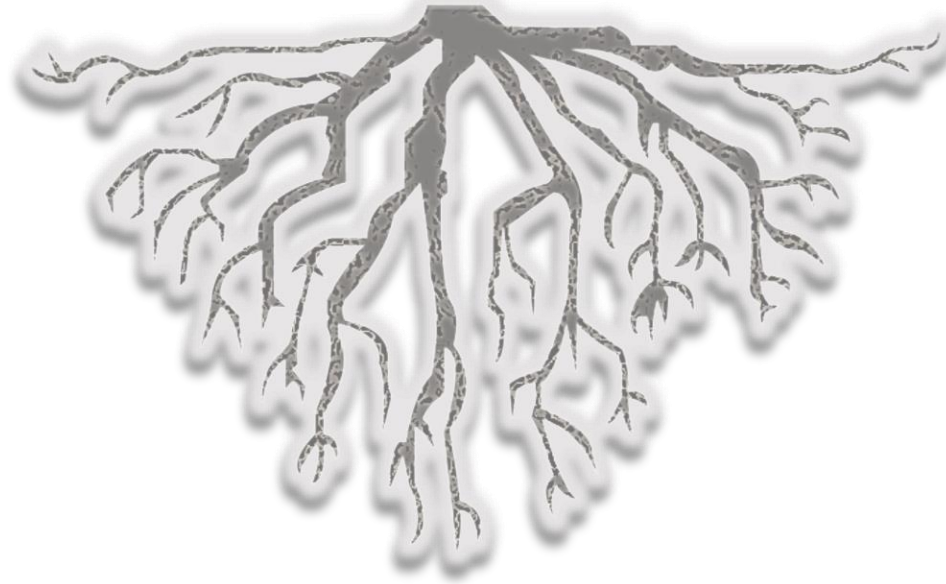
Image Copyright: fizkes's/Shutterstock.com



EIGE's work on Gender-based violence

Vasiliki Saini
25 September 2019, Nicosia

Violence against women



IS ROOTED IN GENDER INEQUALITIES

Gender based-violence

1 in 3

women has experienced
physical and/or
sexual violence

1 in 2

women has experienced
sexual harassment

1 in 20

women has been **raped**

1 in 5

women has experienced
stalking



95%

of victims **trafficked**
for **sexual exploitation** in the EU are women



Cost of Gender-based violence

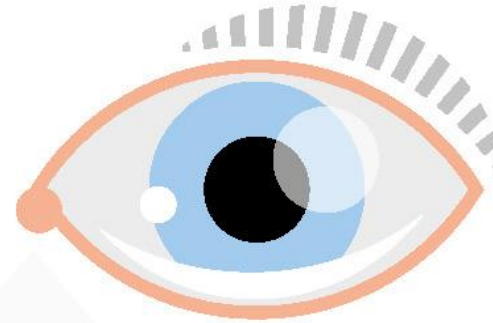
Intimate partner violence against women costs us all

What is intimate partner violence?

Any act of physical/sexual/psychological/economic violence

The perpetrator is a former or current partner/spouse

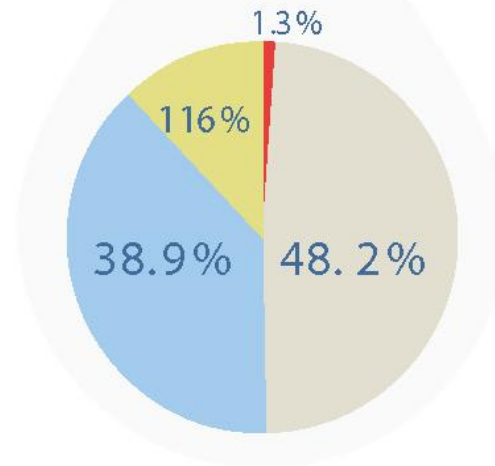
It can happen in a separate or shared household






It is estimated to cost

109 billion
euro per year

How are the costs split?



-  Physical and emotional impact
-  Provision of services (health, social welfare, justice)
-  Lost economic output (lost earnings and absence from work)
-  Specialised services (shelters, helplines, support centres, counselling)

Strategic direction

**Administrative
data**



**Support
Institutional
response**

Work on gender-based violence



Key highlights



Terminology and indicators on administrative data on intimate partner violence



Estimation of girls at risk of FGM



Gender analysis of Victims' Rights and Anti-Trafficking Directives



Guide on risk assessment and risk management



Comparable data is crucial



ADMIN DATA



POLICE



JUSTICE

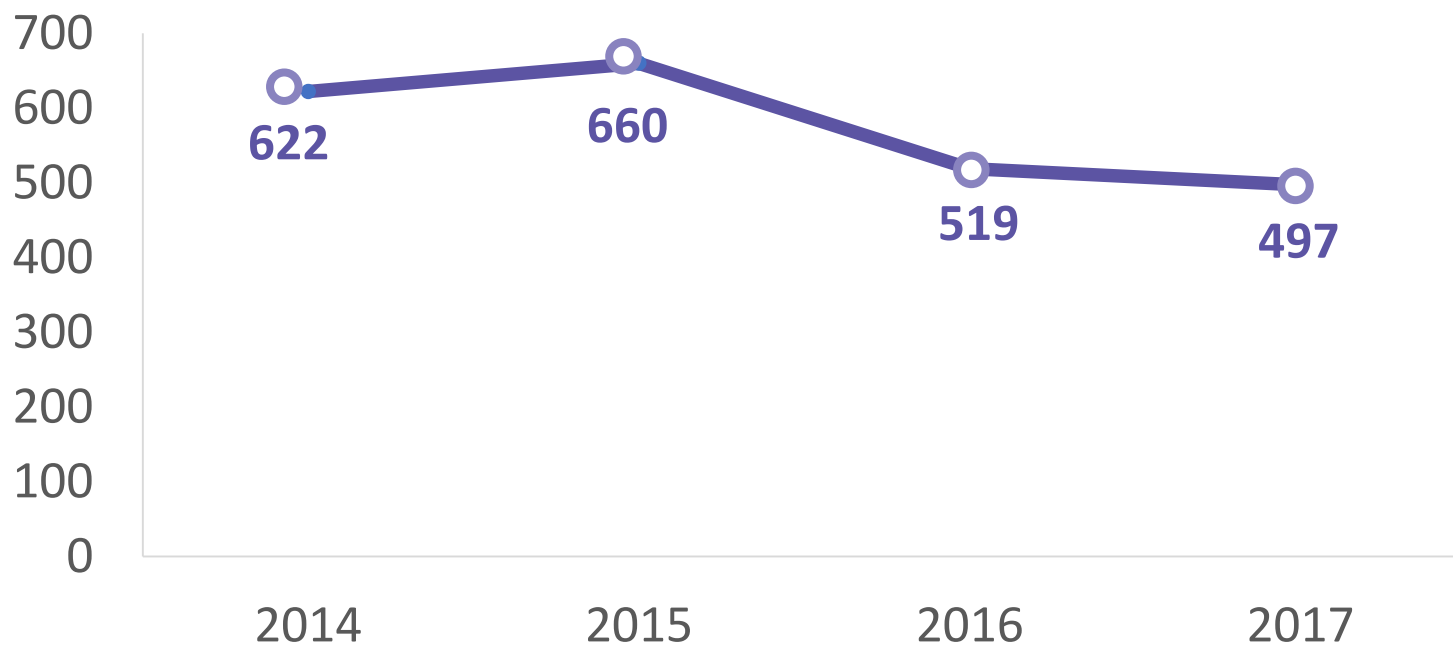


INDICATORS



DEFINITIONS

Number of women victims of intimate partner violence in Cyprus



Forthcoming on the Gender Statistics Database

Recommendations to Cyprus

- Legislative and policy recommendations
- Data collection infrastructure and cooperation between different authorities

Data collection on intimate partner violence by the police and justice sectors
Cyprus

Why do we need administrative data on intimate partner violence?
Many women or girls of intimate partner violence in daily life. However, information is often not shared between different sectors. This leads to a fragmented picture of the situation, which is not always sufficient to ensure a gender-sensitive approach to the investigation. For accountability of data and missing connections result in the lack of evidence against women and in tolerance or normalization. It is thus crucial that they can use the data. Higher standards in recording and justice. It is of course a real gender competence in justice.

The European Institute for Gender Equality (EIGE) defines intimate partner violence as all acts of physical, sexual, psychological or economic violence that occur between former or current spouses or partners, whether or not the perpetrator shares or has shared the same residence with the victim. It constitutes a form of violence which affects women disproportionately and which is therefore distinctly gendered.

28% of women aged 18 and above have been victims of a partner violence by a partner or an ex-partner

2% of these women reported to the police

Source: The Institute for Gender Equality (EIGE) (2018), and Eurostat (2018, April)

Female genital mutilation



Good practices



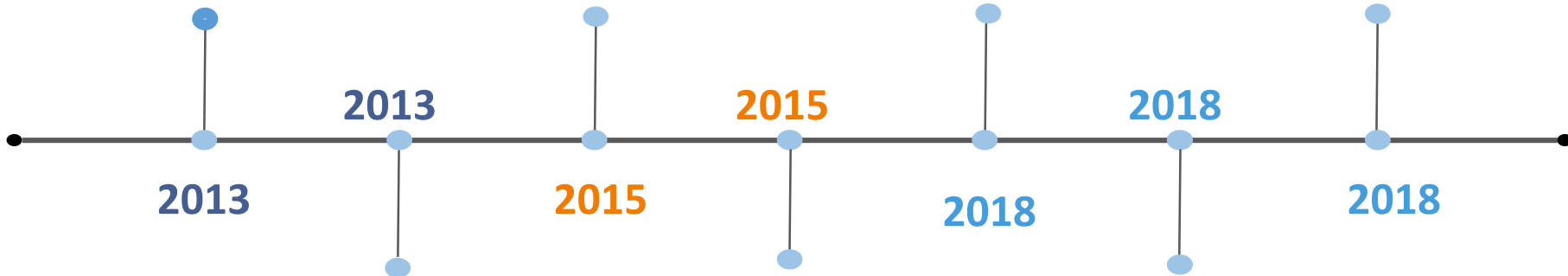
Methodology



Risk estimations



Country factsheets



2013

2013

2015

2015

2018

2018

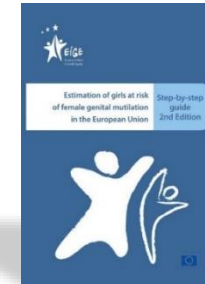
2018



Country factsheets



Risk estimations



Refined Methodology



Number of girls at risk and countries of origin

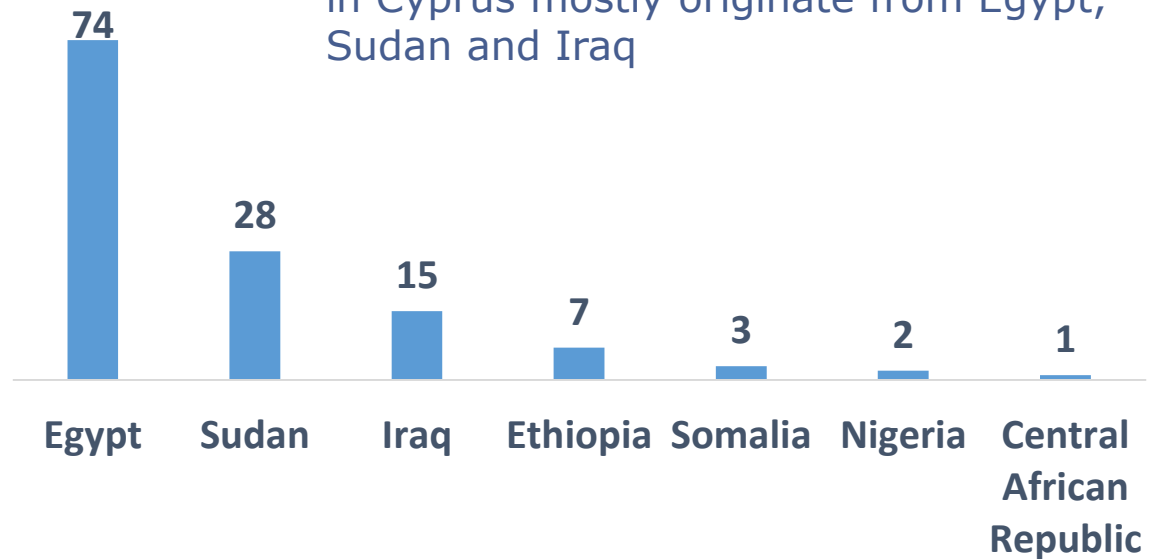
Cyprus



12 – 17 %
at risk of FGM

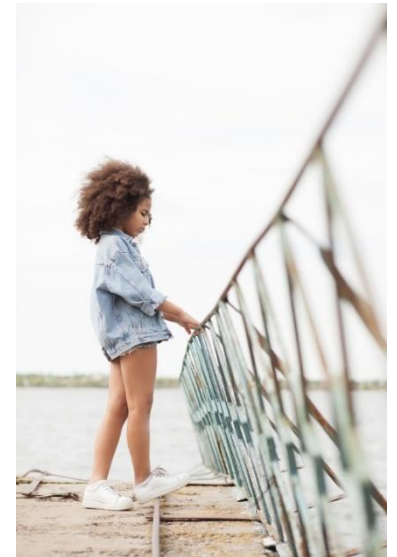
Out of a total population of 758 girls aged 0-18 originating from countries where female genital mutilation is practiced.

Girls at risk of female genital mutilation in Cyprus mostly originate from Egypt, Sudan and Iraq



Recommendations to Cyprus

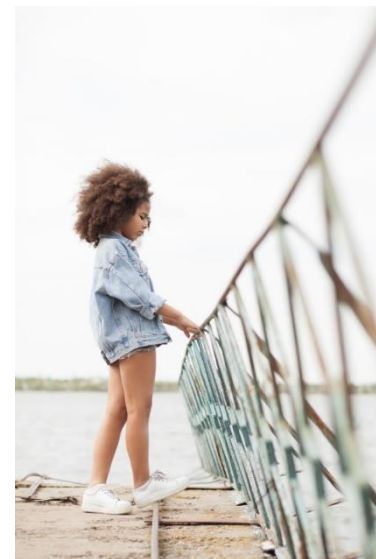
- Strengthen prosecution
- Adopt a gender-sensitive asylum system
- Implement a national prevention strategy
- Create and implement policies with communities
- Provide multidisciplinary support services



Copyright
AmeliaFox/Shutterstock.com

Recommendations to Cyprus

- Train professionals and educate
- Engage men for change
- Raise awareness about the law and health consequences
- Collect information on asylum-seeking girls
- Undertake regular risk estimations with better available data



Copyright
AmeliaFox/Shutterstock.com

Gender based analysis of EU directives

HOW CAN THE EU DIRECTIVES

Victims' Rights
Directive

Anti-Trafficking
Directive



**PROTECT
VICTIMS
OF
GENDER-BASED
VIOLENCE** ?

Cyberviolence



Cyber stalking



Cyber harassment



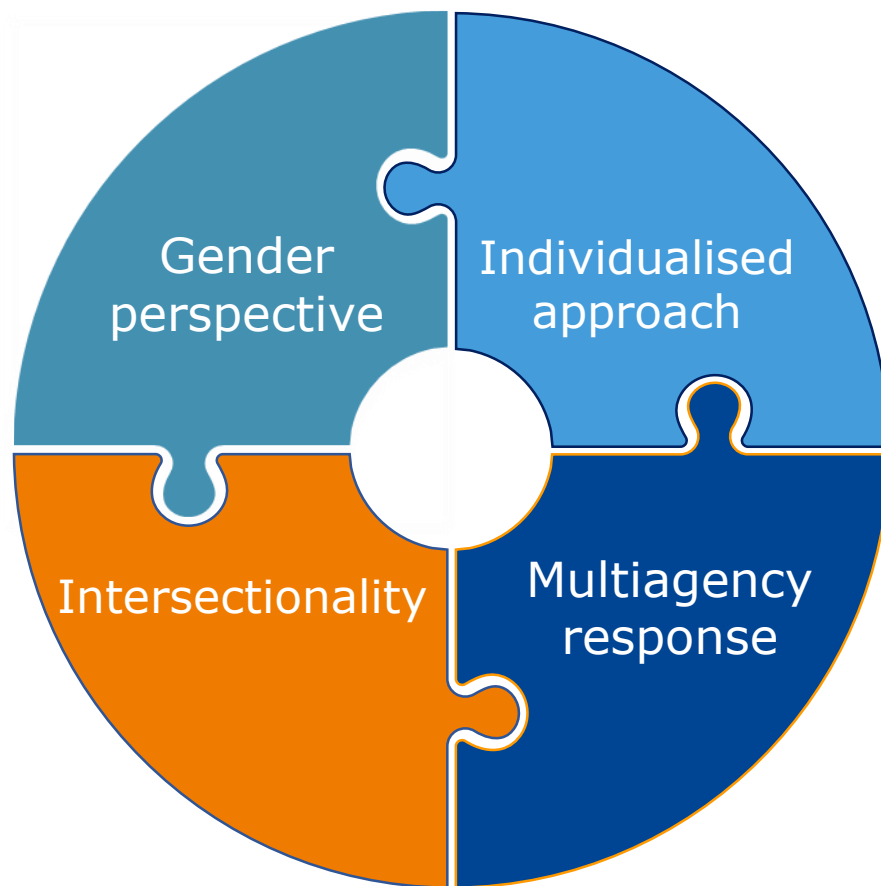
Non-consensual pornography



Luring / 'recruitment'

Guide on risk assessment and risk management

- Guidelines for risk assessment
- Recommendations for risk management



The way forward



Support MSs in administrative data collection and data on gender-related killings



Factors facilitating witness reporting



Female genital mutilation

Let's talk

Connect with us!



eige.europa.eu



[facebook.com/
eige.europa.eu](https://facebook.com/eige.europa.eu)



[twitter.com/
eurogender](https://twitter.com/eurogender)



[eige.europa.eu/
newsletter](http://eige.europa.eu/newsletter)



[eurogender.eige.
europa.eu](http://eurogender.eige.europa.eu)



[youtube.com/
user/eurogender](https://youtube.com/user/eurogender)



**Gedimino pr. 16,
LT-01103 Vilnius,
Lithuania**