



Draft Strategic Framework on Violence against Women 2019 – 2022

Jurgita Pečiūrienė



Violence against women

is rooted in women's unequal status in society

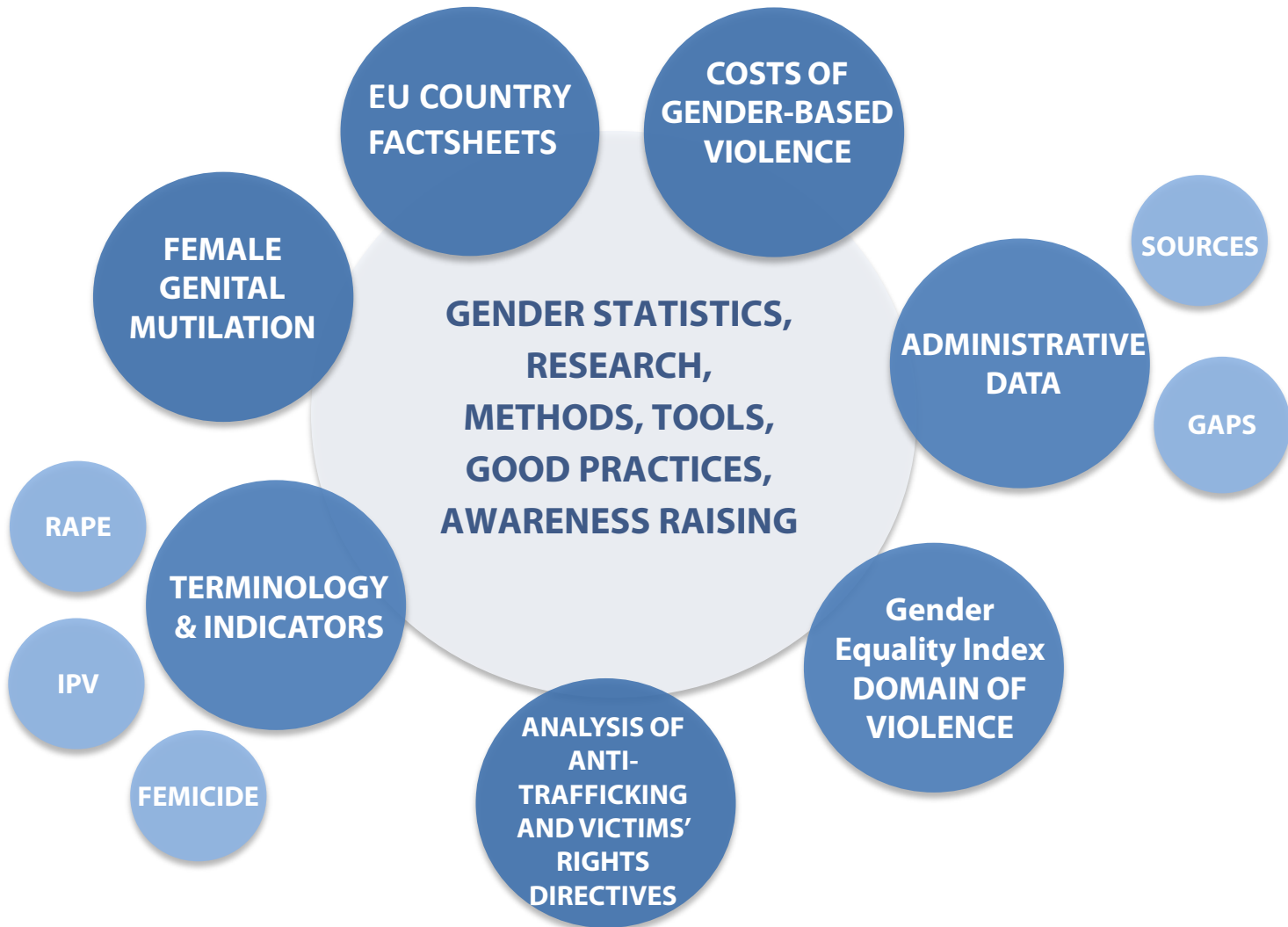
reflected in the unbalanced distribution of social, political and economic power among women and men in society



International framework: need for a holistic approach and comparable reporting



EIGE's work on gender-based violence



Strategic framework on Violence against Women 2019 – 2022



Improvement of administrative data collection

- Femicide
- Female genital mutilation
- Physical violence
- Rape and sexual violence
- Gender Statistics Database
- Eurostat Task Force
- Gender Equality Index

Timeline

2019	2020	2021	2022
Femicide			
<i>Terminology</i>	<i>Assessment</i>	<i>Supporting MS</i>	
	Risk Estimation of Female Genital Mutilation		
	<i>Risk estimation</i>	<i>Dissemination</i>	
		Gender Equality Index	
		<i>Expanding the measurement framework of VAW</i>	
		Physical violence	
		<i>Assessment</i>	<i>Supporting MS</i>
			Rape and Sexual violence
			<i>Terminology</i>

Secondary prevention – police and the judiciary



Timeline

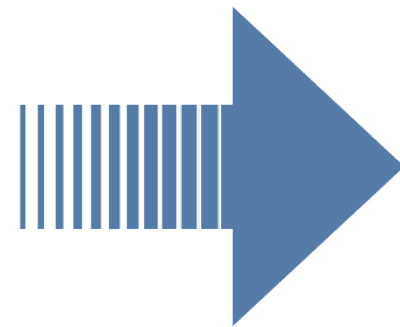
2019	2020	2021	2022
Risk assessment by police of intimate partner violence against women			
<i>Developing tools</i>	<i>Dissemination of results</i>		
		Good practices on prosecution of femicide cases	
		<i>Conducting the study</i>	
Trafficking in Human Beings			
<i>Dissemination</i>			
White Ribbon Campaign			
<i>Dissemination</i>			
Costs of Violence			
<i>Dissemination</i>			

Ways forward

Consulted with
the Management
Board in June

Adopted by the
Management Board
in December

Potential role of Experts' Forum Members



- 1. To what extent do these topics cover the needs of your MS'?**
- 2. What are the challenges you see on these topics in your MS'?**
- 3. How can you support EIGE's work on the improvement of administrative data collection?**

- 1. To what extent do these topics cover the needs of your MS'?**
- 2. What are the challenges you see on these topics in your MS'?**
- 3. How can you support EIGE's work on secondary prevention targeting police and the judiciary?**

- 1. How to identify and engage relevant contacts in your MS'?**
- 2. What are the challenges in identification and engagement of stakeholders?**
- 3. How to overcome these challenges?**

- 1. What is the most effective communication of results in your MS'?**
- 2. How to better reach the targeted audience?**
- 3. How to strengthen your role in the dissemination of results?**

Connect with us!



eige.europa.eu



[facebook.com/
eige.europa.eu](https://facebook.com/eige.europa.eu)



[twitter.com/
eurogender](https://twitter.com/eurogender)



[eige.europa.eu/
newsletter](http://eige.europa.eu/newsletter)



[eurogender.eige.
europa.eu](http://eurogender.eige.europa.eu)



[youtube.com/
user/eurogender](https://youtube.com/user/eurogender)



**Gedimino pr. 16,
LT-01103 Vilnius,
Lithuania**