

ხვატლ იქნემატ გვიან

საქართველოში უმრავლესობა მიიჩნევს, რომ უნდა იმოქმედოს როცა სხვას ცუდად ექცევიან

“ჩემს ქმარს არ უყვარს როდესაც ჩემს მეგობრებთან და ოჯახთან ერთად ვატარებ დროს. მეუბნება, რომ მენდობა, თუმცა არ ენდობა სხვებს.”

– თინა

თუ შენს ნაცნობს სჭირდება დახმარება:

- 1 წამოიწყე მასთან საუბარი
- 2 მოუსმინე, არ განსაჯო
- 3 ურჩიე, დარეკოს 116 006 - ზე და გაატანე ამ ზარათის მოსახეფი კალენდარი

“ნეტა, დროულად მივმხვდარიყავით და არ მიგვეტოვებინა თინა. რაც უნდა ეთქვა, მიზეზი მხოლოდ ერთი იყო - ქმარი უკრძალავდა ჩვენთან ურთიერთობას...დაგვაგვიანდა...”

– თინას მეგობრები

ACTIONABLE DATA FOR BYSTANDER BEHAVIOR CHANGE

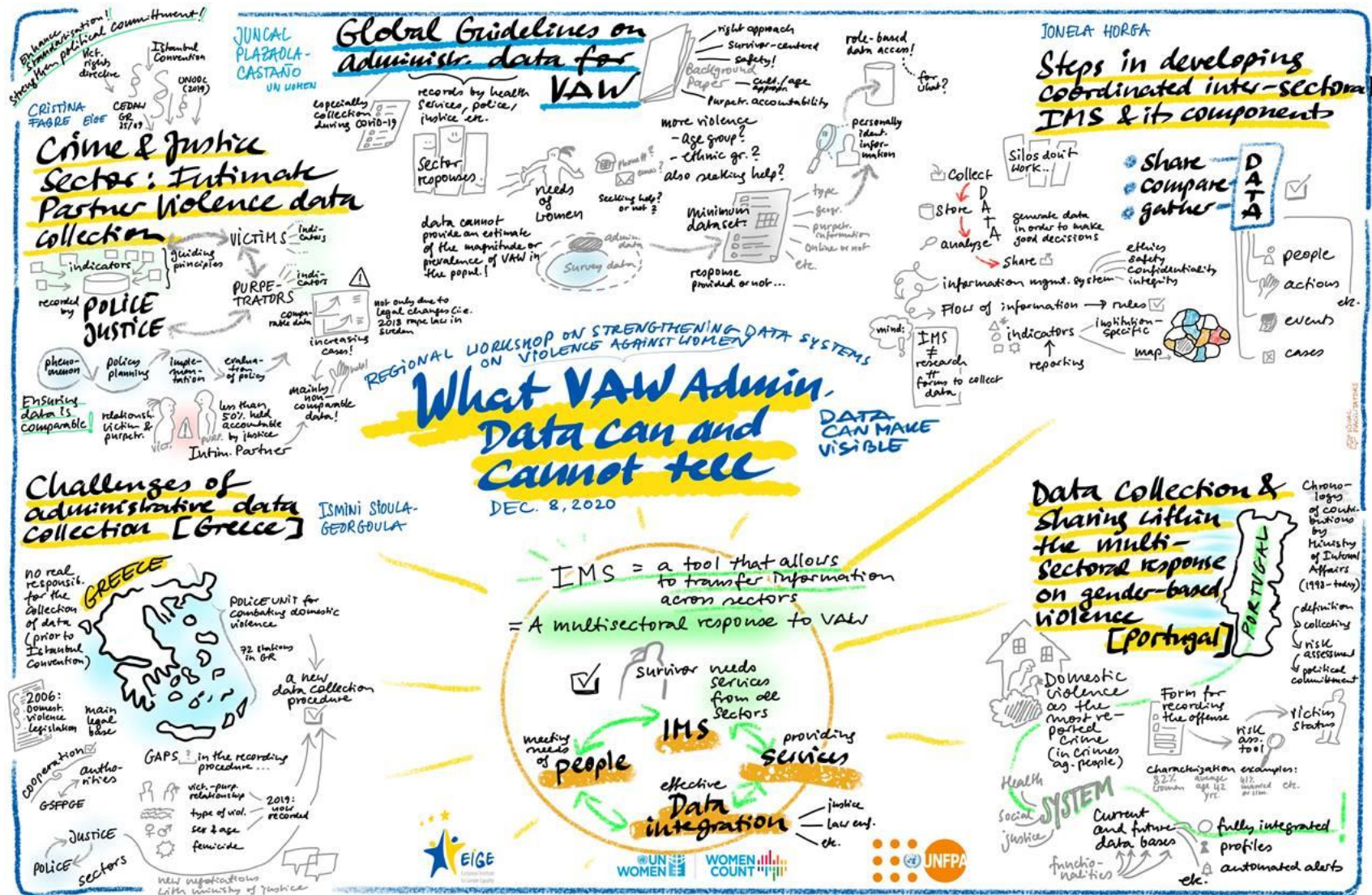
KHATUNA SANDROSHVILI

UNDP GEORGIA

9 DECEMBER 2020

REGIONAL WORKSHOP ON STRENGTHENING DATA SYSTEMS ON VIOLENCE AGAINST WOMEN FOR EUROPE AND CENTRAL ASIAN COUNTRIES

- Engagement of users – in design, data collection and analysis;
- Scarcity of Research on Intimate Partner Violence;
- Women remaining invisible to decision-makers;



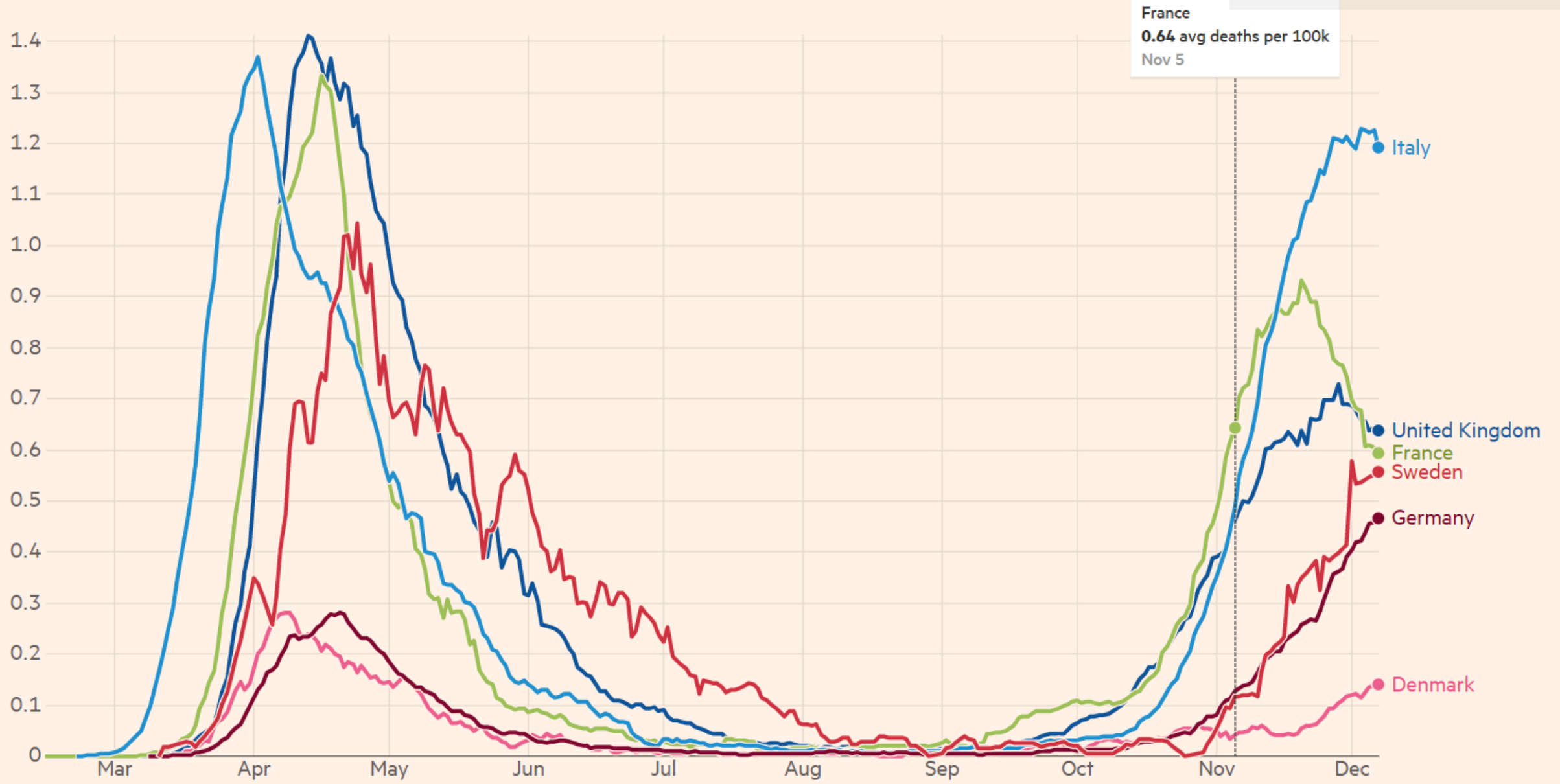
BETWEEN EVIDENCE AND ACTION

■ The PM essentially said, “We cannot wait for evidence. We cannot wait until we are entirely sure what will work. We are going to make mistakes. I am going to make mistakes.”

<https://www.linkedin.com/pulse/corona-a-update-2-when-top-executive-fails-purpose-christian-bason>



Corona update #2 When the top executive fails on purpose
Several times the past week Danish Prime Minister Mette Frederiksen addressed the nation on the emerging COVID-19 crisis. At one of th



Source: Financial Times analysis of data from the European Centre for Disease Prevention and Control, the Covid Tracking Project, the UK Government coronavirus dashboard, the Spanish Ministry of Health and the Swedish Public Health Agency. Data updated December 8 2020 1.37pm GMT. Interactive version: ft.com/covid19

NAVIGATING UNCERTAINTY

- Probing
- Adjusting course of action
- Making sense of what worked post-factum

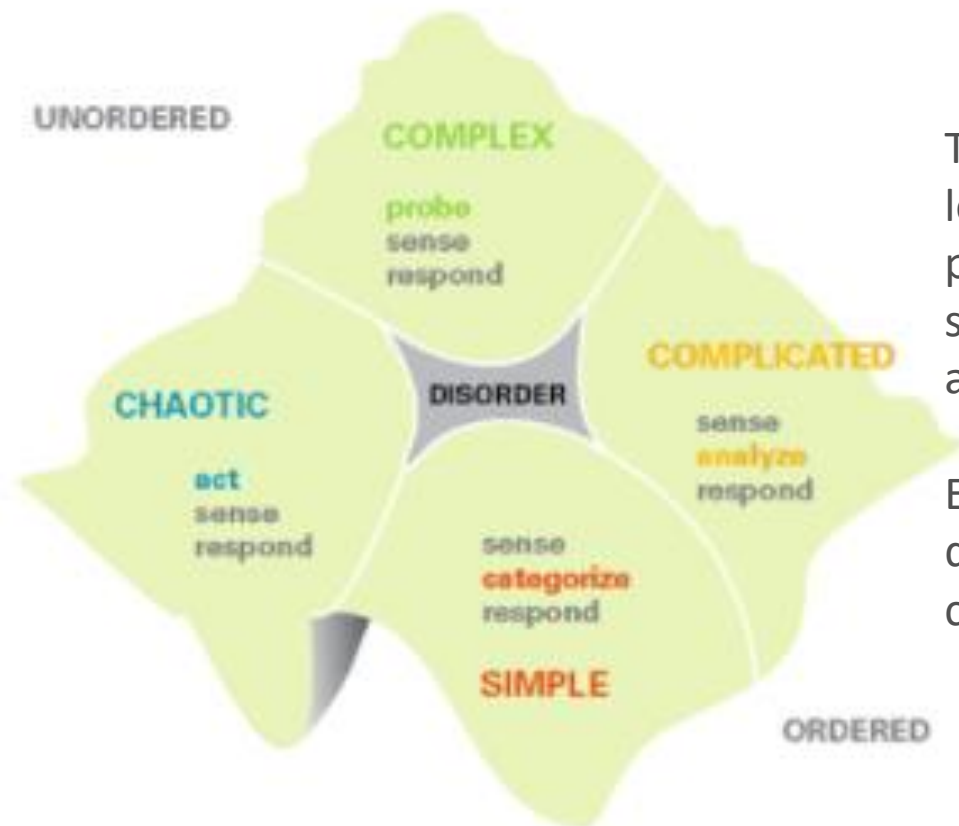
Harvard
Business
Review

A Leader's Framework for Decision Making

by [David J. Snowden](#) and [Mary E. Boone](#)

From the Magazine (November 2007)

The Cynefin Framework



The Cynefin framework helps leaders determine the prevailing operative context so that they can make appropriate choices.

Each domain requires different actions. Simple and complicated contexts

MICRO NARRATIVE RESEARCH

- Combining quantitative and qualitative research
- Collaborative and user-centered
- Near real-time/actionable data
- Open access and feedback loops



Workshop was held through activating t ServiceLab, United Nations for Women

Results of the condi workshop. It's impo innovative analyzing research was collec Nukriani) and Guria accidentally – in the

of violence were analyzed in regions. Data was collected in the comm al café "Knowledge café".

ECOSYSTEM OF ACTORS

- Collaborative design
- Collective intelligence

- Ministry of Justice Public Service Development Agency and ServiceLab;
- ATIP fund - State Fund for the Protection of the Rights of the Victims of Human Trafficking operating a hotline 116006 to meet the needs of the victims of the family violence;
- Czech Embassy, Czech-UNDP Partnership for SDGs;
- Government of Denmark funding UNDP Innovation Facility in New York;
- UN Women and its network of governmental and non-governmental organisations which have been actively engaged in the design and implementation of every stage of this initiative;
- And partners who continued day to day engagement on pro-bono basis - Forset and ISET research teams;
- UN Gender Theme Group, South Africa and their partners;



COLLABORATIVE DESIGN AND ANALYSIS

Examining the problem

Identifying the key research
question

Defining scope of further
exploration

Demographics

SECTION I: THE SITUATION

This section will take no more than 10 mins to complete. You will be asked to share an experience from your life. You will then be asked to respond to a series of follow up questions relating to this experience. It does not matter how long is the story; it is not necessary to indicate your name or names of the people in the story; you do not need to worry about spelling or grammar

1.1 Think about a recent situation when you witnessed or learned about family violence.
What happened?

Now think about the situation you shared earlier and answer a few questions about it.

3.1 Did you act/do something about this situation?

Yes

If selected, answer questions 3.2, 3.3, 3.4, 3.5 below

3.2 You did something because you... [stages bystanders go through]

Felt responsible for dealing with it

N/A

Could rely on support of public services
Knew what to do/
how to help

No

If selected, answer question 3.6 below

3.6 You did not act/do something because you... [barriers]

Believed it was not your job/place

N/A

Feared for your safety
Did not know how to help



DATA COLLECTION

- Online
- Volunteer data collectors
- No interviews
- Fully anonymous
- Average time 5-7 mins
- 600 narratives in 4 weeks
- 400 analysed

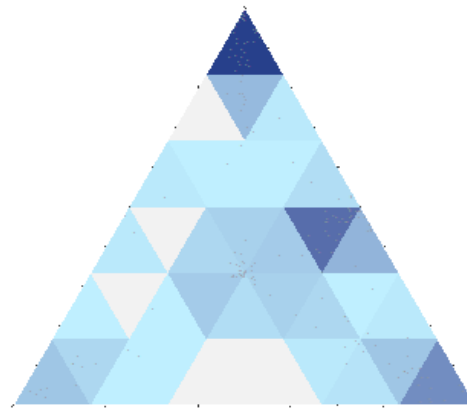
KEY FINDINGS

DECISION TO ENGAGE

ANALYSIS

- Findings analysed
- Shared with the working group
- Shared with wider public

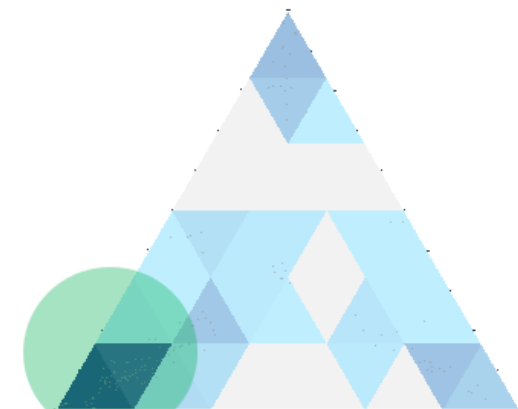
Respondents who engaged
3.7 You decided to act/not act the way you did because...
To you it was the right thing to do



You did not have a choice

It was an appropriate/acceptable way to act

Respondents who did not engage
3.7 You decided to act/not act the way you did because...
To you it was the right thing to do



You did not have a choice

It was an appropriate/acceptable way to act

Bystanders do not engage when they feel powerless

FURTHER FINDINGS

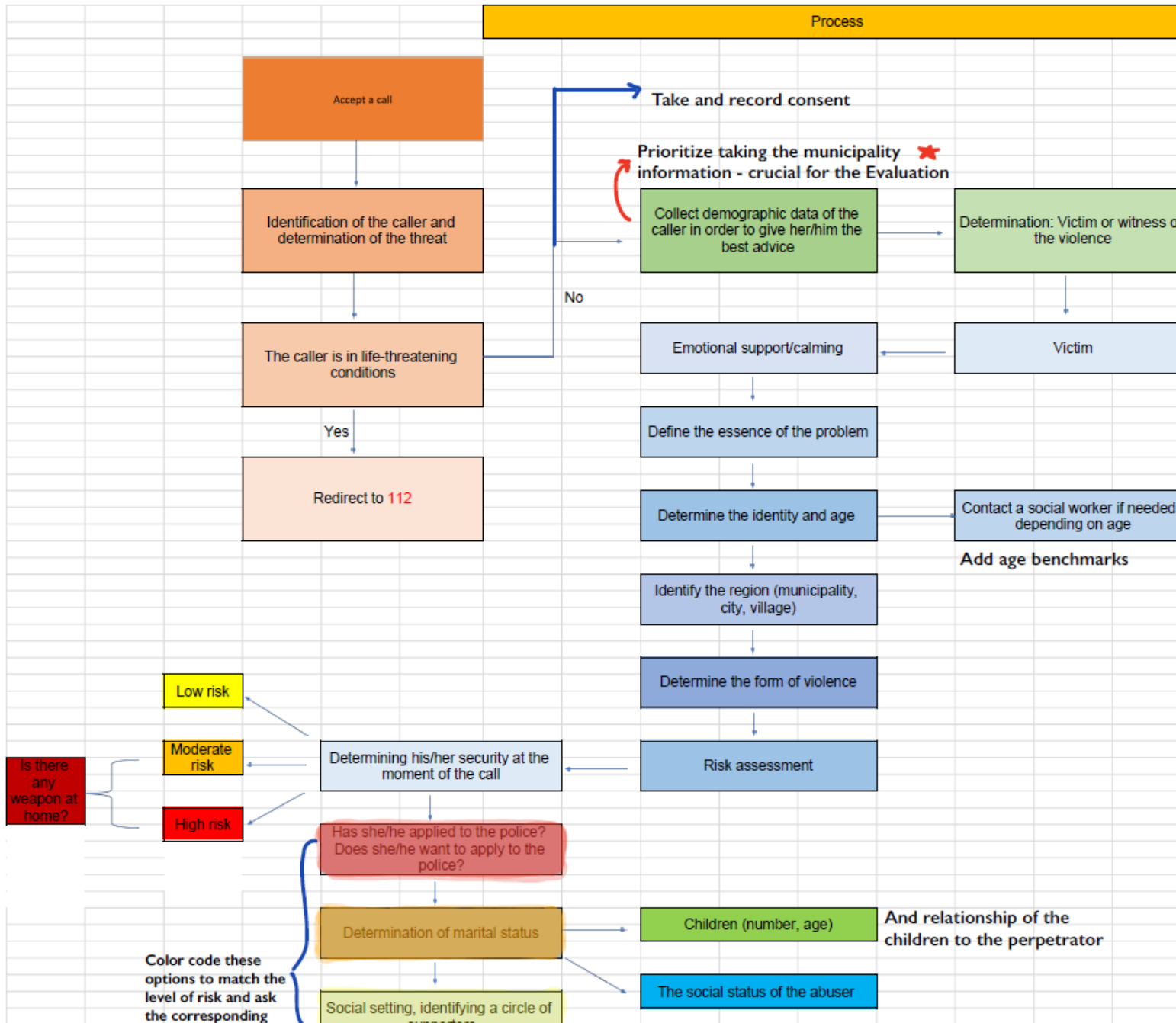
Interventions aimed to design/support informal networks can be effective

Informal support networks (neighbours) seem to be an effective but rarely used strategy, calling the police – the most used but often ineffective engagement strategy

Interventions aimed to encourage survivors to act may not be sufficient and/or effective

Survivors do not reach out for help and do not trust/want to involve public services

SERVICE DELIVERY HOTLINE PROTOCOL



- UPDATED 116006 HOTLINE PROTOCOL

- COMMUNICATION TRAINING OF OPERATORS

- HOTLINE DATA COLLECTION

Not at all

In this situation you...

Did not get personally involved immediately

Did you act/do something about this situation? Yes No

Situations witnessed by bystanders

Are you related to/do you know either the victim or the perpetrator

- No
Yes, acquaintance of both
Yes, related to the perpetrator
Yes, related to both
Yes, friends with the victim
Yes, related the victim
Yes, friends with both
Yes, acquaintance of the perpetrator
Yes, acquaintance of the victim

About bystanders

Table with 8 columns: Gender, Marital status, Ethnicity, Monthly income, Attendance of religious services, Region of residence, Region originally from, Residence. Includes rows for Female, Male, Age groups, and various demographic details.

Close
Title: ზრმა სიყვარული მოძალადის მიმართ.
Experience: ვერ მორიდდნენ ჩემი მეგობრები თუ სად უნდა ეცხოვრათ და ემუშავათ, საზღვარგარეთ თუ საქართველოში. ბიჭის დედ-მამა თურქეთში მოღვაწეობს და შესაბამისად ბიჭსაც უნდოდა იქ გადასვლა, ხოლო ცოლს საქართველოში დარჩენა ერჩივდა, რადგან არ მიაჩნდა საჭიროდ სხვაგან წასვლა. ფინანსურად თითქმის იგივე გამოსდიოდათ. ცხოველური ქონდა. მეგონა სადაც იყო დაახრჩობდა. მოგვიდღე გოგონას ხელი და წავედით სახლიდან. აღარ აპირებდა დაბრუნებას, მაგრამ ქმართან საუბრის შემდეგ გადაიფიქრა და დაბრუნდა ისევ მასთან. მაგის მერე ჩალურჯებები შევამჩნიე მის სხეულზე, მაგრამ ვერაფერი შევძელი.

INTERACTIVE DATA VISUALISATION



At the end, circle the behaviour you would like to change

BEHAVIOURAL INSIGHTS

PARTNERSHIP WITH BEHAVIOURAL INSIGHTS TEAM



UNDP Georgia

Sponsored · 🌐

შენს დახმარებას მეგობრის მდგომარეობის გაუმჯობესება შეუძლია როცა მას პარტნიორი არასათანადოდ ეპყრობა.



DOCS.GOOGLE.COM

დაელაპარ?

Learn More

იხელთეთ დრო, როცა თქვენი მეგობარი პარტნიორთან...

👍👎 59

4 Comments 7 Shares

👍 Like

💬 Comment

➦ Share

Support + Helplessness



UNDP Georgia

Sponsored · 🌐

საქართველოში ძალიან ცოტა ადამიანი ფიქრობს, რომ უნდა გაჩუმდეს, როცა მის ნაცნობს პარტნიორი არასათანადოდ ეპყრობა.



DOCS.GOOGLE.COM

დაეხმარე

Learn More

იხელთეთ დრო, როცა თქვენი მეგობარი პარტნიორთან...

👍❤️ 56

3 Comments 16 Shares

👍 Like

💬 Comment

➦ Share

Services + Private Matter



THE
BEHAVIOURAL
INSIGHTS
TEAM

**APPLYING BEHAVIORAL
INSIGHTS TO ENCOURAGE
BYSTANDER ACTIONS
AGAINST
INTIMATE PARTNER
VIOLENCE**

**UNDP – UN
WOMEN
PILOT 2018**

DESIGNING AN RCT

ADDRESSING THE BARRIERS TO
BYSTANDER ACTION

IPV expert advice and narratives research also guided our design process

Bystanders should start the conversation by actively listening and providing non-judgmental support



Bystanders lack knowledge of how to help and can get entangled in abusive situations

Bystanders should ultimately send survivors to receive expert advice

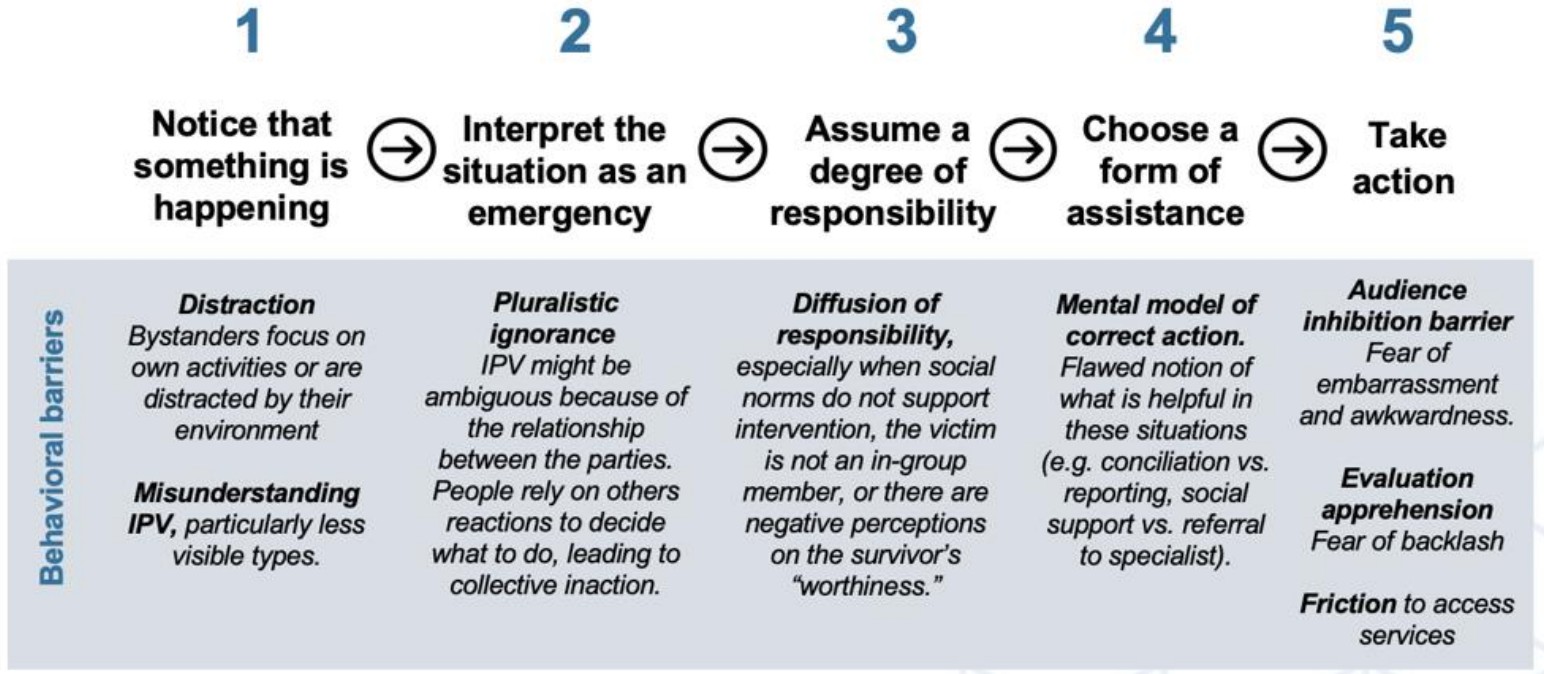


Strong social networks exist

Behavioral barriers may impact follow through at every stage.



We aim to tackle these barriers through flyers, posters and videos distributed in Public Service Halls and Community Centers throughout Georgia



Latane and Darley (1970) Situational bystander intervention model

ხვატლ იქნემა გვიან

საქართველოში უმრავლესობა მიიჩნევს, რომ უნდა იმოქმედოს როცა სხვას ცუდად ექცევიან

“ჩემს ქმარს არ უყვარს როდესაც ჩემს მეგობრებთან და ოჯახთან ერთად ვატარებ დროს. მეუბნება, რომ მენდობა, თუმცა არ ენდობა სხვებს.”

– თინა

თუ შენს ნაცნობს სჭირდება დახმარება:

- 1 წამოიწყე მასთან საუბარი
- 2 მოუსმინე, არ განსაჯო
- 3 ურჩიე, დარეკოს 116 006 - ზე და გაატანე ამ ზარათის მოსახეფი კალენდარი

“ნეტა, დროულად მივმხვდარიყავით და არ მიგვეტოვებინა თინა. რაც უნდა ეთქვა, მიზეზი მხოლოდ ერთი იყო - ქმარი უკრძალავდა ჩვენთან ურთიერთობას...დაგვაგვიანდა...”

– თინას მეგობრები

THANK YOU!

ACT NOW – TOMORROW WILL BE LATE

TWITTER: [@S_KHATUNA](#)

KHATUNA.SANDROSHVILI@UNDP.ORG