



United Nations Entity for Gender Equality
and the Empowerment of Women

An overview of UN Women global level activities to improve the availability, reliability and use of data on violence against women

Juncal Plazaola Castaño
Policy Specialist, Violence against Women Data
UN Women

Regional Coordination Meeting of EU candidate
countries and potential candidates
Istanbul, 13-14 May 2019

UN WOMEN/ WHO GLOBAL JOINT PROGRAMME (2018-2022)

UN Women/WHO Global Joint Programme *Strengthening methodologies and measurement and building national capacities for violence against women data*

(1) Refinement of methodologies

- Measurement of psychological intimate partner violence (WHO)
- Measurement of violence against older women (WHO)
- Measurement of violence against women with disabilities (WHO)
- Regional and global estimates (WHO)
- SDGs reporting
- Administrative data guidelines (UN Women)

(2) Capacity building for implementation of VAW prevalence surveys (with UNFPA)

(3) Data use for policy and programming

* Links with UN Women *Women Count* Programme

 **UN
WOMEN**

United Nations Entity for Gender Equality
and the Empowerment of Women

ADMINISTRATIVE DATA GUIDELINES I

(1) Process

- Technical Advisory Board (2019)
- Background paper (2019)
- Expert Group Meeting (2019)
- Guidelines development (2020)
- Piloting (2020-2021)

(2) Main elements in background paper

(I) Guiding Principles

(II) Why Are Administrative Data Important?

Service Use and Service Demand Monitoring
Understanding Service Quality
Case Management within and across Sectors
Capacity, Costing, and Resource Allocation

ADMINISTRATIVE DATA GUIDELINES II

(2) Main elements in background paper

(III) What VAW Administrative Data Should Be Collected?

- Minimum Data Set

- Shared definitions

(IV) How to Collect, Store, Analyze, Share and Report?

- Personally Identifiable Information

- Consent

- Building Data Management System Capacity

- Data Collection and Entry

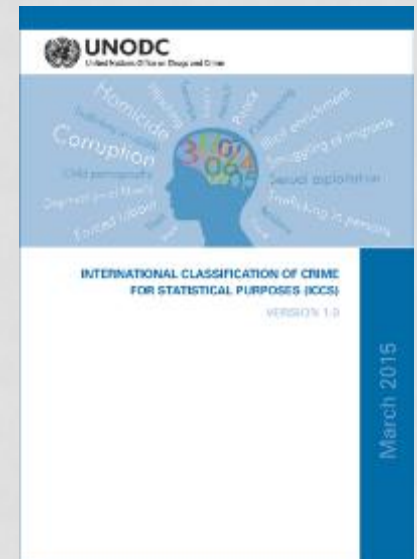
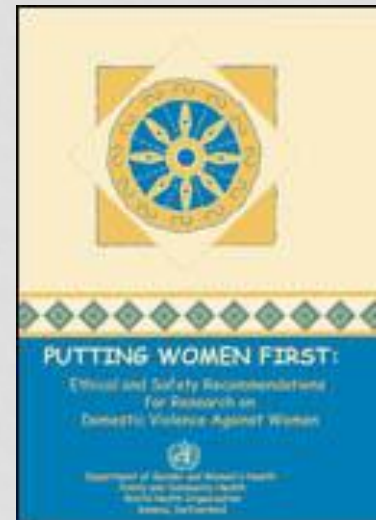
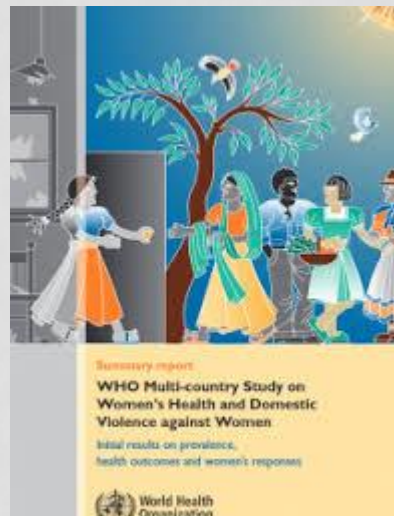
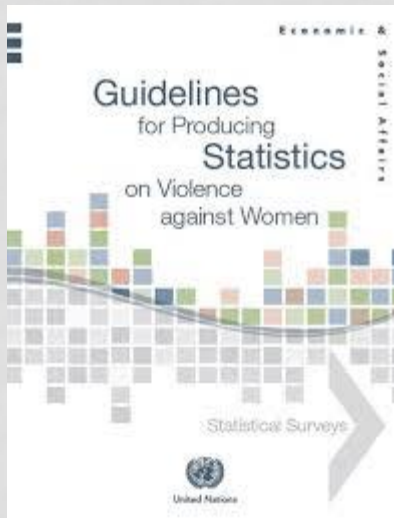
- Data Processing and Analysis

- Data Sharing and Data Linkage while Ensuring Survivor Safety

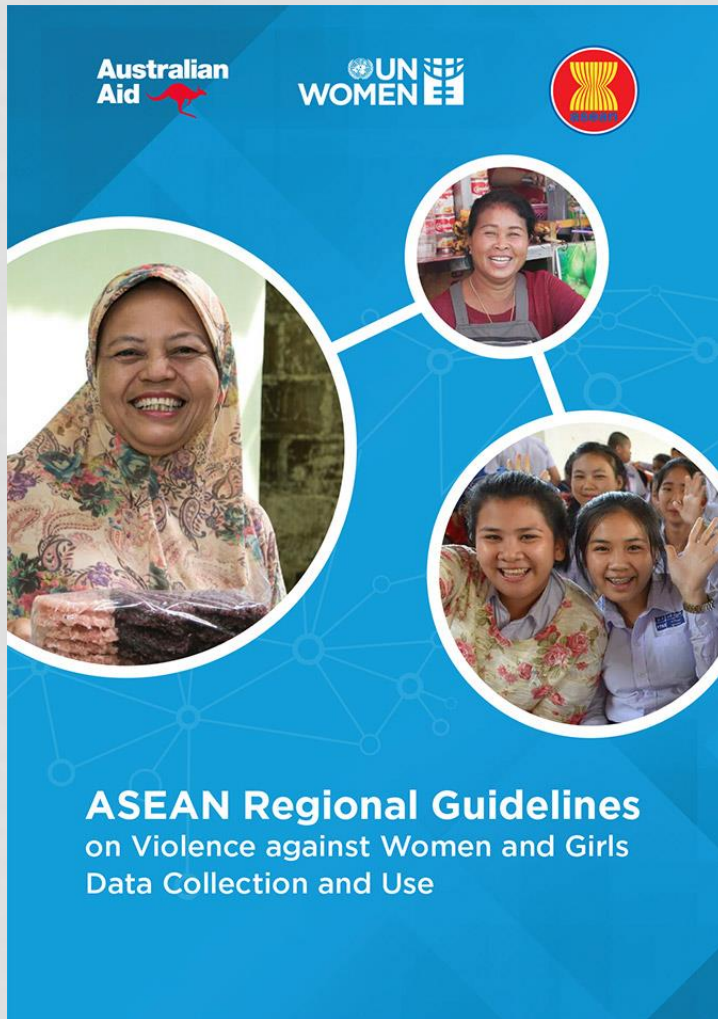
- Reporting

(V) Recommendations

RESOURCES AVAILABLE



RESOURCES AVAILABLE



The guidelines provide guidance on:

- Prevalence data
- Administrative data
- Costing data
- Sustainable Development Goals
- Ethics, safety and confidentiality principles

THANK YOU

j.plazaolacastano@unwomen.org



United Nations Entity for Gender Equality
and the Empowerment of Women