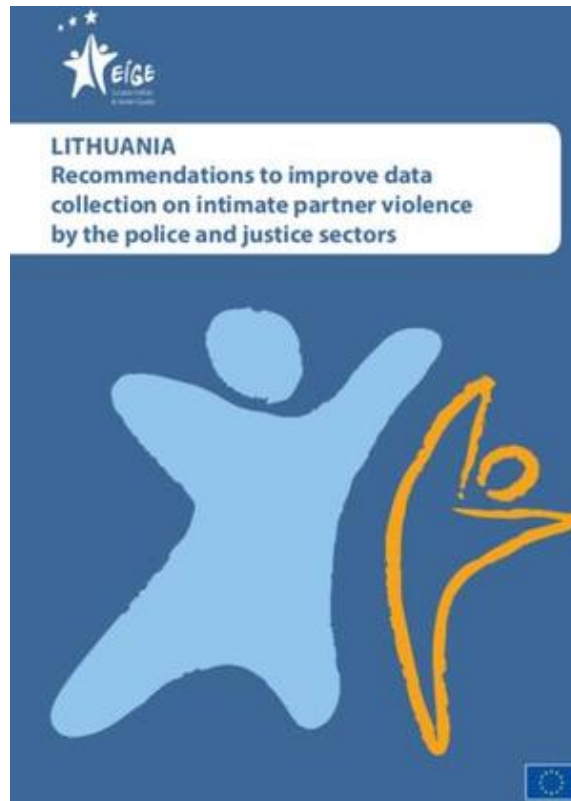


Recommendations to improve data collection on intimate partner violence by the police and justice sectors: Lithuania



The recommendations were developed after an in-depth analysis of data collection from the police and justice sectors. They aim to improve administrative data collection on intimate partner violence to better inform policies and to help the Member States meet the monitoring requirements outlined in both Directive 2012/29/EU (the Victims' Rights Directive) and the Istanbul Convention.

Read more

[Data collection on intimate partner violence by the police and justice sectors - all EU countries](#)



[Indicators on intimate partner violence and rape for the police and justice sectors](#)





Downloads



Recommendations to improve data collection on intimate partner violence by the police and justice sectors: Lithuania

EN (PDF, 170.01 KB)

Metadata

COUNTRY: Lithuania

AREAS: Data collection on violence against women, Gender-based violence

AUTHOR: EIGE

PUBLISHER: EIGE

ISBN: 978-92-9470-384-2

DOI: 10.2839/560532