

Gender Impact Assessment

Gender Impact Assessment Policies can reinforce inequalities by impacting women and men differently.

This step-by-step guide helps institutions identify where policies are causing or strengthening gender inequalities and how they can be effectively re-directed. It provides both a theoretical model of gender impact assessment and real, hands-on information from several EU Member States on its practical use.

Why use gender impact assessment

Success stories from the EU Member States

Contents

- [Back to toolkit page](#)
 - [What is Gender Impact Assessment](#)
 - [Why use Gender Impact Assessment](#)
 - [Who should use Gender Impact Assessment](#)
 - [When to use Gender Impact Assessment](#)
 - [Guide to Gender Impact Assessment](#)
 - Step 1: Definition of policy purpose
 - Step 2: Checking gender relevance
 - Step 3: Gender-sensitive analysis
 - Step 4: Weighing gender impact
 - Step 5: Findings and proposals for improvement
 - [Following up on gender impact assessment](#)
 - [General considerations](#)
 - [Examples from the EU](#)
-

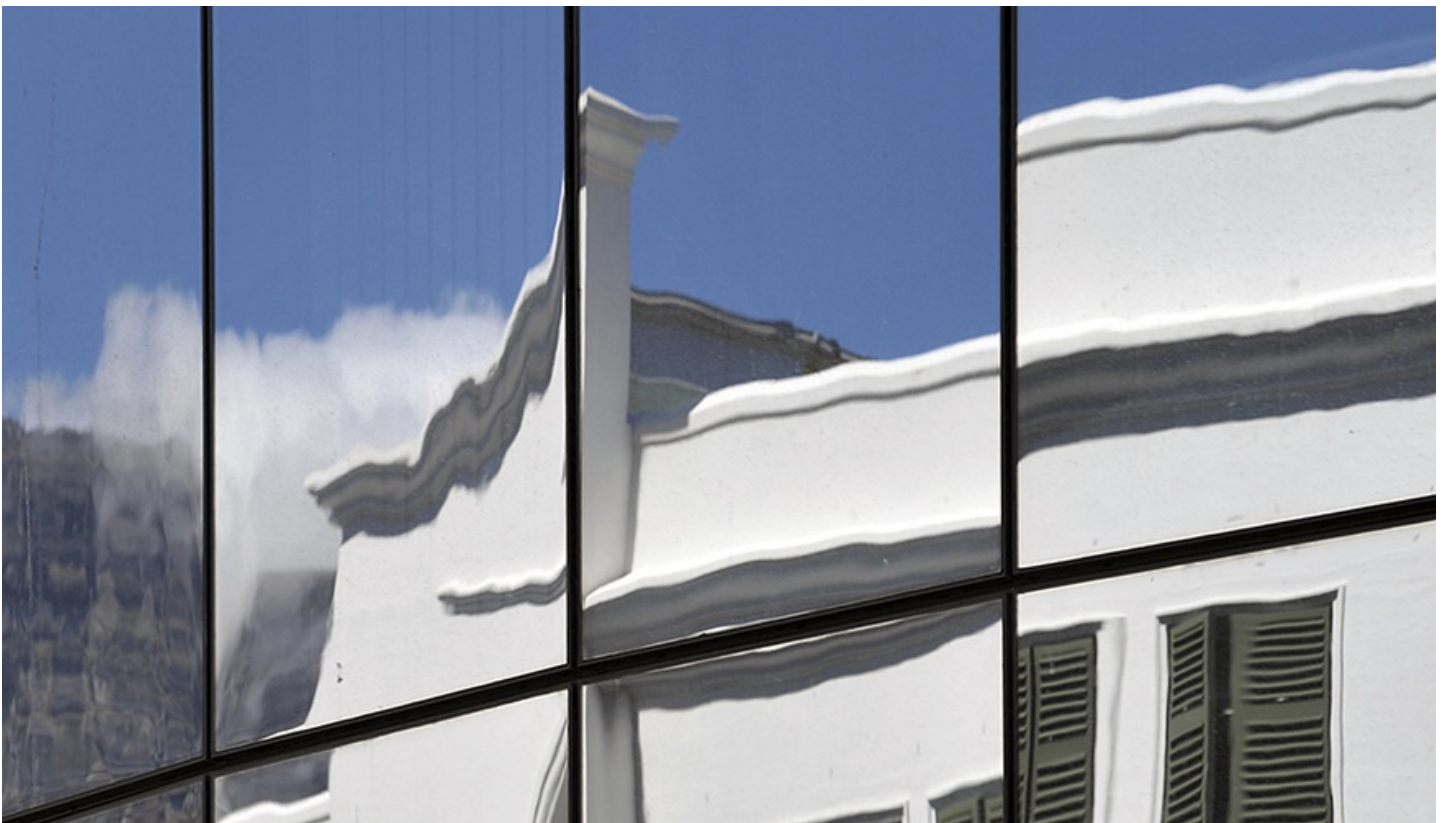
Downloads

[Download the Gender Impact Assessment guide EN \(1.26 MB\)](#)

More gender mainstreaming toolkits



Gender equality training



Institutional transformation

Gender equality in academia and research: GEAR

SEE ALL
TOOLKITS →