

# Gender-based violence

## Gender-based violence

Gender-based violence is both a cause and a consequence of gender inequality. Therefore, providing resources to put an end to it is an important part of our work. We provide research, statistics and expertise to help understand the problem and the way it affects our societies. We have carried out a broad range of groundbreaking studies on gender-based violence in Europe.

How much do we all pay to deal with violence? Why do we need to improve administrative data collection from police and justice? Is female genital mutilation a problem in the European Union? Is cyber violence a real threat? You will find answers to these and many other questions in our research.

[What is gender-based violence?](#) →

[Female genital mutilation in the EU](#) →

[Analysis of EU directives from gender perspective](#) →

[Administrative data collection on violence against women](#) →

[Cyber violence against women](#) →

[Risk assessment of intimate partner violence](#) →

[Costs of gender-based violence in the EU](#) →

[Statistics on gender-based violence](#) →

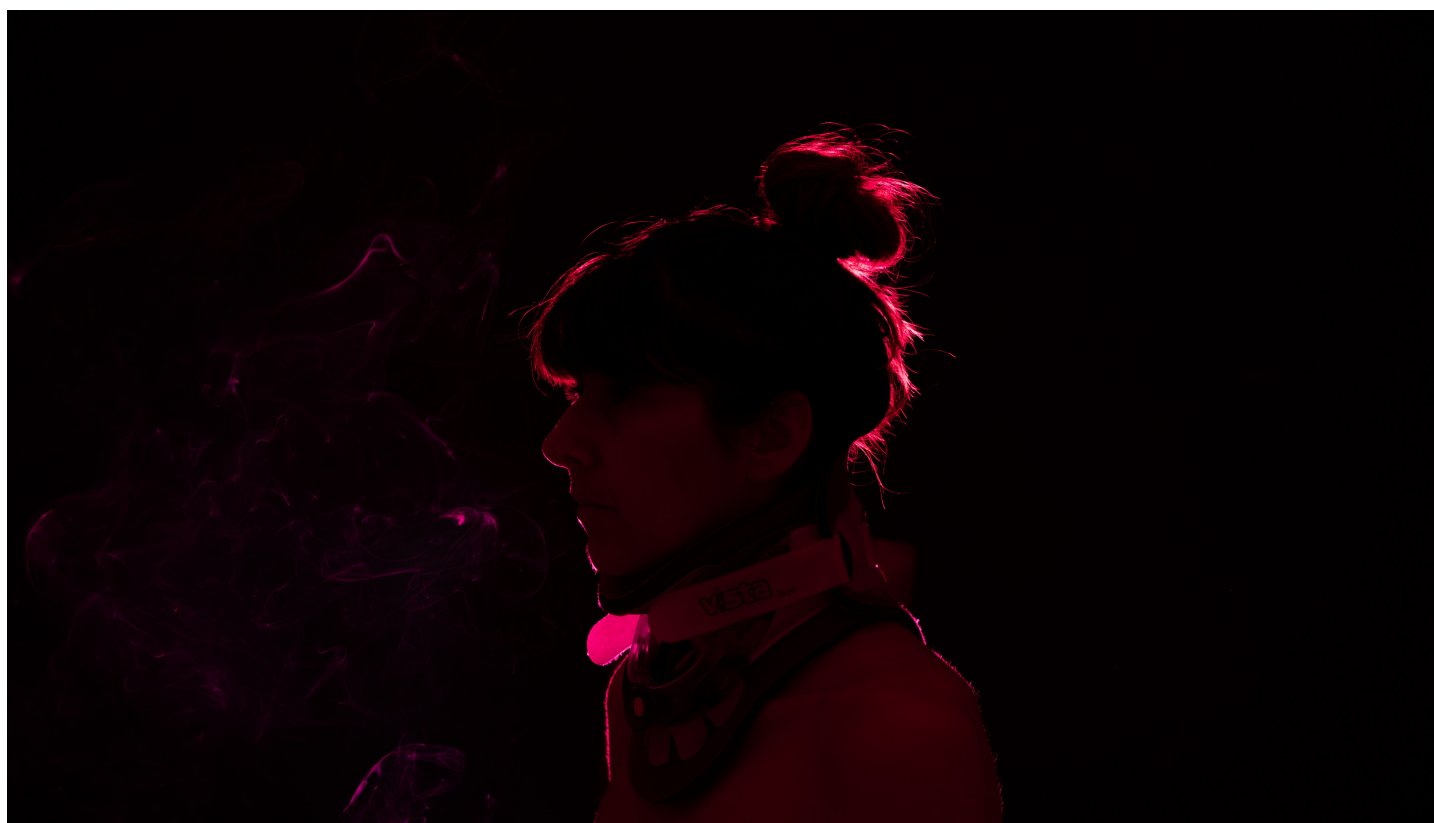
---

## Featured



### **Covid-19 wave of violence against women shows EU countries still lack proper safeguards**

In two new studies, the European Institute for Gender Equality (EIGE) assesses the measures each EU country took to protect women during the pandemic and shows how governments can amplify the role of people witnessing violence.



## Risk assessment: protecting women from lethal violence

More than one woman was killed every day by an intimate partner or family member in the EU on average in 2016. To help police prevent repeated acts of intimate partner violence and save lives, the European Institute for Gender Equality (EIGE) has developed a risk assessment guide for police.

---

## Gender-based violence publications



HEALTH, JUSTICE, VIOLENCE

**Intimate partner violence and witness intervention: what are the deciding factors?**



VIOLENCE

**Risk assessment and management of intimate partner violence in the EU**



## **A guide to risk assessment and risk management of intimate partner violence against women for police** →

---

[VIEW ALL](#)  
→