

Gender-sensitive communication

Gender-sensitive communication

To tackle gender inequality, we must look at the way we communicate.

This toolkit provides guidelines for the use of gender-sensitive language in writing. Gender-sensitive communication ensures that women and men – and those who do not conform to the binary gender system – are treated as persons of equal importance and dignity.

Test your knowledge

Practical tools

Contents

- Overview of the toolkit

- First steps towards more inclusive language
 - ▣ · Terms you need to know
 - Why should I ever mention gender?
 - Choosing whether to mention gender
 - Key principles for inclusive language use

- Challenges

- ▣ · Test your knowledge

- ▣ · Practical tools

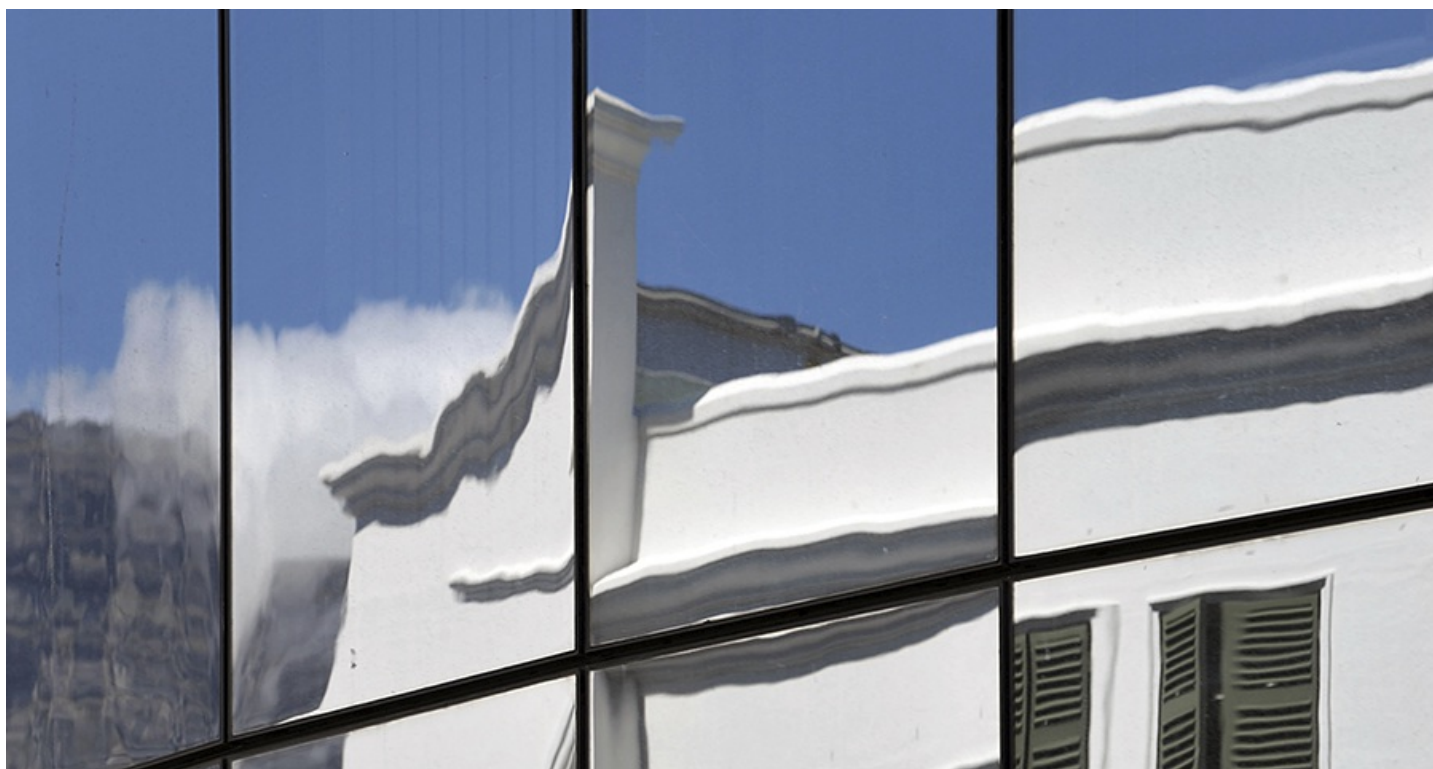
- ▣ · Policy context

Downloads

More toolkits



[Gender equality training](#)





Institutional transformation



Gender impact assessment

SEE ALL
TOOLKITS →