

# Gender Impact Assessment

## Gender Impact Assessment Policies can reinforce inequalities by impacting women and men differently.

This step-by-step guide helps institutions identify where policies are causing or strengthening gender inequalities and how they can be effectively re-directed. It provides both a theoretical model of gender impact assessment and real, hands-on information from several EU Member States on its practical use.

Why use gender impact assessment

Success stories from the EU Member States

## Contents

- [Back to toolkit page](#)

---

- [What is Gender Impact Assessment](#)

---

- [Why use Gender Impact Assessment](#)

---

- [Who should use Gender Impact Assessment](#)

---

- [When to use Gender Impact Assessment](#)

---

- [Guide to Gender Impact Assessment](#)
  - Step 1: Definition of policy purpose
  - Step 2: Checking gender relevance
  - Step 3: Gender-sensitive analysis
  - Step 4: Weighing gender impact
  - Step 5: Findings and proposals for improvement

---

- [Following up on gender impact assessment](#)

---

- [General considerations](#)

---

- [Examples from the EU](#)

---

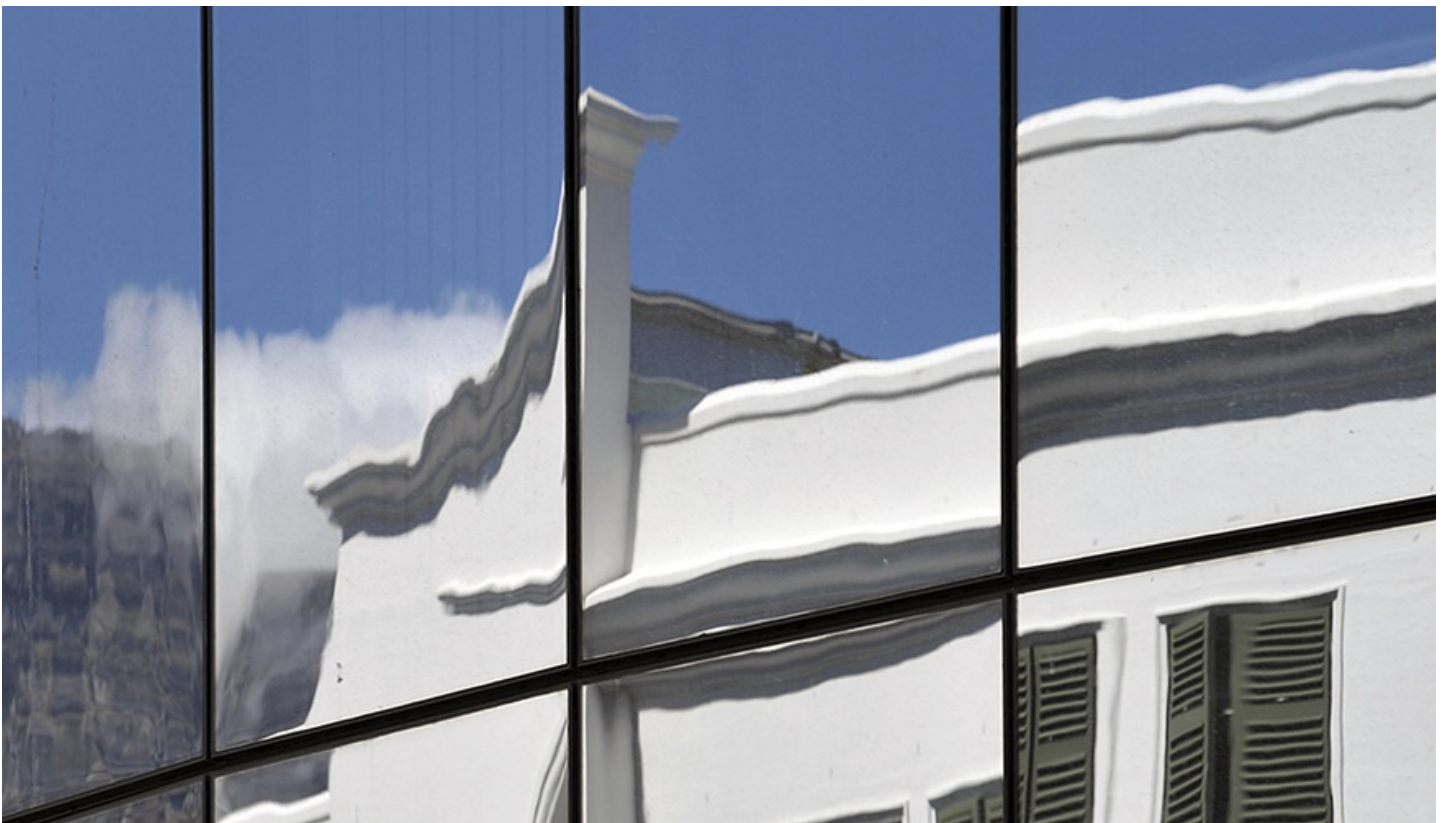
## Downloads

[Download the Gender Impact Assessment guide EN \(1.26 MB\)](#)

## More gender mainstreaming toolkits



## Gender equality training



## Institutional transformation

---

---

## Gender equality in academia and research: GEAR

SEE ALL  
TOOLKITS →