

Gender Impact Assessment

Gender Impact Assessment

Policies can reinforce inequalities by impacting women and men differently.

This step-by-step guide helps institutions identify where policies are causing or strengthening gender inequalities and how they can be effectively re-directed. It provides both a theoretical model of gender impact assessment and real, hands-on information from several EU Member States on its practical use.

Why use gender impact assessment

Success stories from the EU Member States

Contents

- [Back to toolkit page](#)
- [What is Gender Impact Assessment](#)
- [Why use Gender Impact Assessment](#)
- [Who should use Gender Impact Assessment](#)
- [When to use Gender Impact Assessment](#)
- [Guide to Gender Impact Assessment](#)
 - ▣ [Step 1: Definition of policy purpose](#)
 - ▣ [Step 2: Checking gender relevance](#)
 - ▣ [Step 3: Gender-sensitive analysis](#)
 - ▣ [Step 4: Weighing gender impact](#)
 - ▣ [Step 5: Findings and proposals for improvement](#)
- [Following up on gender impact assessment](#)
- [General considerations](#)

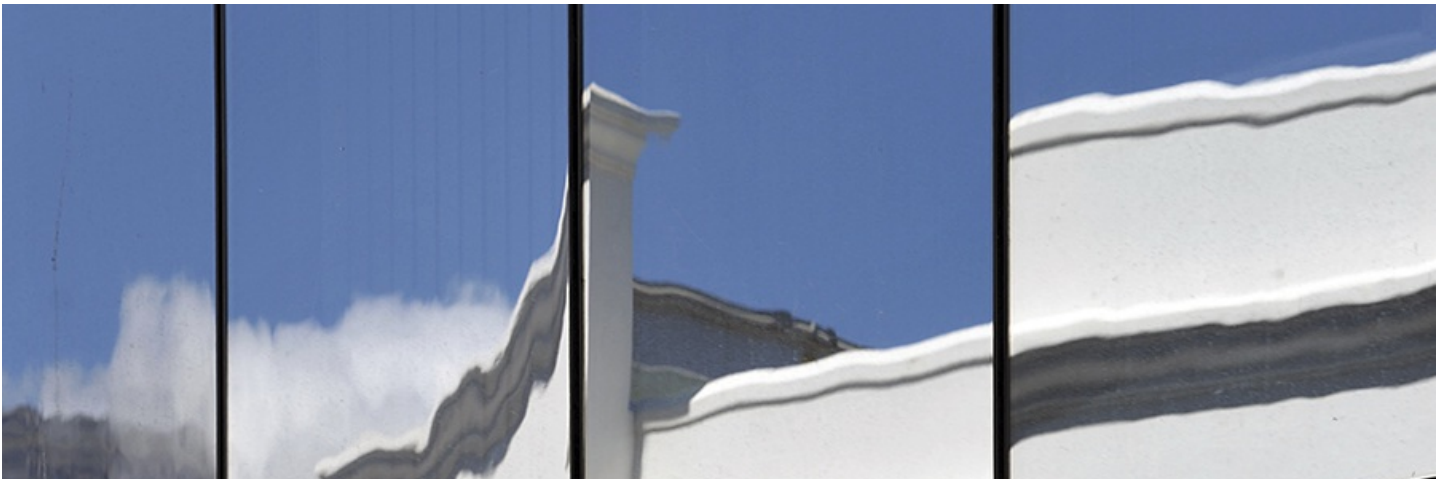
Downloads

Download the Gender Impact Assessment guide EN (1.26 MB)

More gender mainstreaming toolkits



Gender equality training





Institutional transformation



Gender equality in academia and research: GEAR

SEE ALL
TOOLKITS →