

Gender Impact Assessment

Gender Impact Assessment

Policies can reinforce inequalities by impacting women and men differently.

This step-by-step guide helps institutions identify where policies are causing or strengthening gender inequalities and how they can be effectively re-directed. It provides both a theoretical model of gender impact assessment and real, hands-on information from several EU Member States on its practical use.

Why use gender impact assessment

Success stories from the EU Member States

Contentus

- [Back to toolkit page](#)
- [What is Gender Impact Assessment](#)
- [Why use Gender Impact Assessment](#)
- [Who should use Gender Impact Assessment](#)
- [When to use Gender Impact Assessment](#)
- [Guide to Gender Impact Assessment](#)
 - ▣ [Step 1: Definition of policy purpose](#)
 - [Step 2: Checking gender relevance](#)
 - [Step 3: Gender-sensitive analysis](#)
 - [Step 4: Weighing gender impact](#)
 - [Step 5: Findings and proposals for improvement](#)
- [Following up on gender impact assessment](#)

General considerations

Examples from the EU

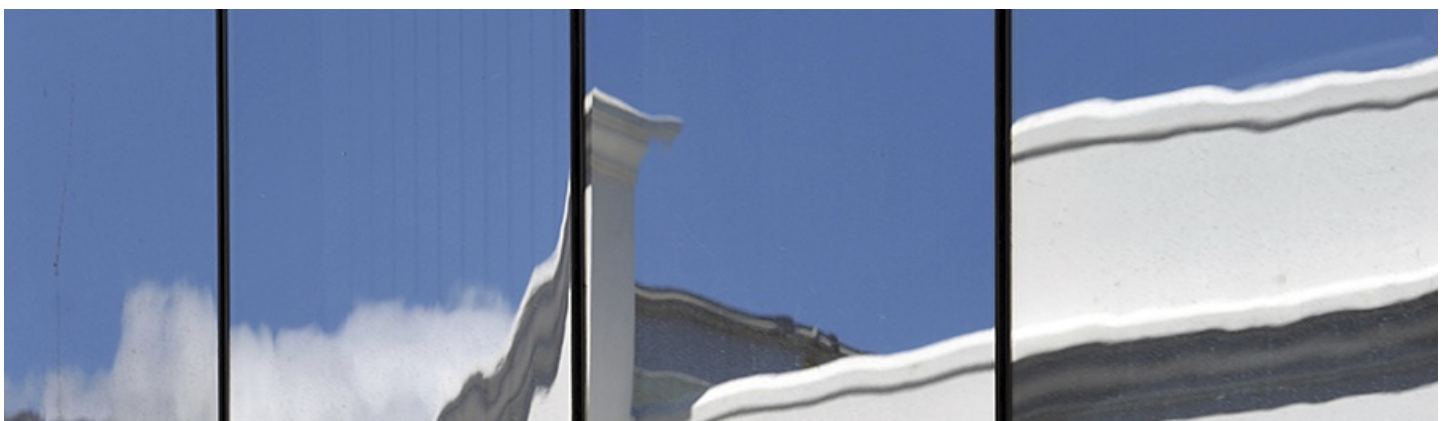
Downloads

Download the Gender Impact Assessment guide EN (1.26 MB)

More gender mainstreaming toolkits



Gender equality training





Institutional transformation



Gender equality in academia and research: GEAR

[SEE ALL
TOOLKITS](#) →